

Russia. Polyethylene

Monthly report

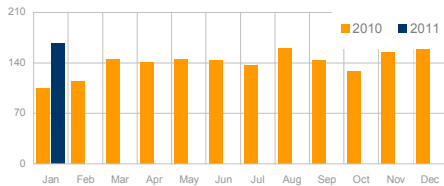
March 05, 2011

Editor: Sergey Karaichentsev

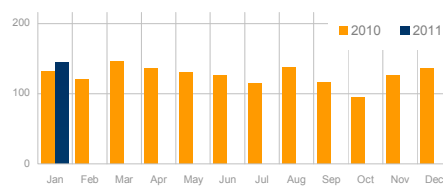
E-mail: serгей.karaichentsev@mrcplast.com

General Indexes: LDPE, HDPE, LLDPE

Consumption, KT

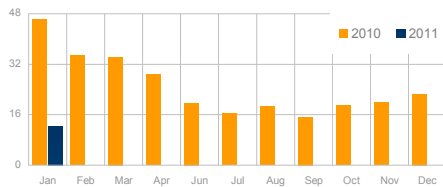


Production, KT

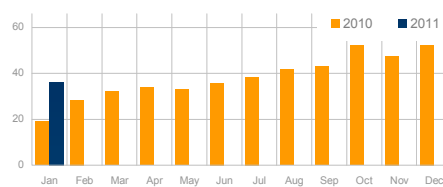


General Indexes: LDPE, HDPE, LLDPE

Export, KT

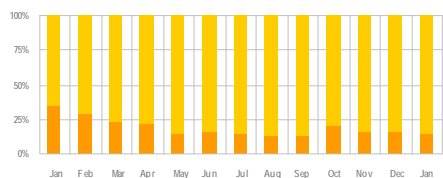


Import, KT

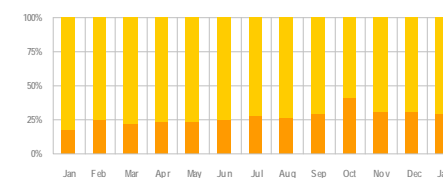


General Indexes: LDPE, HDPE, LLDPE

Export to Production, %

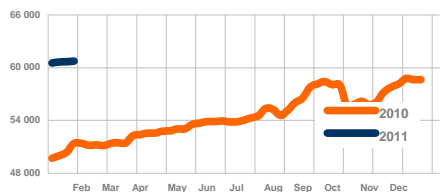


Import to Consumption, %

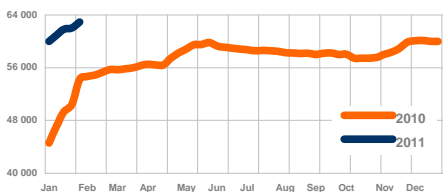


HDPE, LDPE, domestic market

HDPE price, domestic market, CPT, Moscow, RUB/MT



LDPE price, domestic market, CPT, Moscow, RUB/MT



LDPE output in January remained at December level. Import deliveries from Belarus increased to record 4.5 thousand tonnes. For Russian converters the beginning of the year was marked by price increases. Both LDPE and HDPE values went higher. At the same time, large stocks of traders restrained growth of prices in January. Last month Russian producers increased HDPE production. Gazprom Neft Salavat has shown record production volumes. Imports traditionally reduced, significantly exceeding, however, the level of January 2010.



- 2 - growth regarding the previous month (mtp****)
- 3 - growth regarding the same month last year (mtm***)
- 4 - from the beginning of the year up to the analyzed month inclusive (ytm**)
- 5 - growth regarding the same period last year (ptp*)

Contents

LDPE.....	3
HDPE.....	17
LLDPE.....	27

Russia

- Total estimated PE consumption in January was 167.6 thousand tonnes (+61% ptp*). In the first half of January, as usual, all converters shut down for scheduled turnarounds. Many companies began returning online just after January 11. Some pipe producers resumed operation just at the beginning of February.
- Estimated LDPE consumption increased 48% ptp* to 55.3 thousand tonnes. Demand for film-grade polyethylene in January almost disappeared. Many converters were running on old stocks made as early as at the end of December.
- The beginning of the year was marked by price increases for Russian LDPE consumers. Domestic price increases reached 2,400 Rb/tonne under the pressure from growing PE values in Europe and Asia. In the spot market traders' stocks helped to maintain January prices at a rollover from December.
- Estimated HDPE consumption increased 58% ptp* to 98.33 thousand tonnes ytm* in January, due to almost entire standstill of the market during New Year holidays, Russian producers faced a serious overstocking. Gazprom Neft Salavat in January produced a record volume of injection HDPE - around 7.7 thousand tonnes.
- As expected, import deliveries reduced last month. Total import volume in January amounted to around 22.2 thousand tonnes, whereas in January 2010 this figure was a little over 10 thousand tonnes. Film-grade and pipe-grade HDPE made up the bulk of the volume.
- In the second half of January Nizhnekamskneftekhim resumed production of HDPE. Limited supply opportunities of European producers in January - March forced Nizhnekamskneftekhim to renew LLDPE production, which had been initially planned to restart in March.
- Despite low demand and significant stocks, Russian producers implemented increases in HDPE prices for January. Nizhnekamskneftekhim and Stavrolen also announced increases in March values.
- Expectedly, LLDPE deliveries to the Russian market in January reduced to 14.04 thousand tonnes. In the second half of the month Nizhnekamskneftekhim suspended the production. In addition, stretch film producers cut import volumes in January due to weak seasonal demand. LLDPE reduced to 7.14 thousand

General Indexes: LDPE, HDPE, LLDPE

Consumption, KT

Year	Jan	Feb	Mar	Apr	May	Jun	Jul	Aug	Sep	Oct	Nov	Dec	mtm ³ ,%	ytm ⁴	ptp ⁵ ,%
2003	51,09	55,15	67,44	70,27	72,39	65,45	74,34	72,60	75,91	79,24	69,40	60,84	-12%	814,12	-12%
2004	65,89	58,14	97,21	94,93	99,84	81,42	67,79	78,74	77,16	77,03	82,18	85,26	29%	965,58	29%
2005	82,06	69,28	85,61	84,60	100,90	102,10	78,48	90,67	96,92	102,91	93,13	111,20	25%	1 097,87	25%
2006	90,06	89,10	100,58	98,40	115,63	82,20	74,14	96,12	105,41	136,08	139,95	134,29	10%	1 261,97	10%
2007	125,14	115,41	109,70	124,51	125,43	130,60	121,60	125,97	125,39	136,80	124,25	119,56	39%	1 484,36	39%
2008	118,92	126,19	131,66	126,17	128,30	131,70	110,30	113,65	118,28	144,21	115,09	98,33	-5%	1 462,79	-5%
2009	92,83	97,77	102,24	89,26	101,98	106,16	124,60	123,03	116,96	115,34	115,52	113,00	-22%	1 298,68	-22%
2010	104,20	114,90	144,10	140,56	144,33	143,18	136,57	160,20	143,87	128,14	153,85	170,73	12%	1 684,63	12%
2011	167,66	-	-	-	-	-	-	-	-	-	-	-	61%	167,66	61%

Production, KT

Year	Jan	Feb	Mar	Apr	May	Jun	Jul	Aug	Sep	Oct	Nov	Dec	mtm ³ ,%	ytm ⁴	ptp ⁵ ,%
2003	86,80	77,30	95,00	93,80	91,70	67,10	62,30	71,30	89,00	102,00	99,90	102,00	0%	1 038,20	0%
2004	100,51	85,37	105,40	100,06	99,07	74,14	54,21	73,60	84,58	93,89	92,00	91,35	16%	1 054,19	16%
2005	93,09	81,23	91,98	85,31	96,24	89,94	60,54	75,47	88,25	93,14	87,04	93,69	-7%	1 035,91	-7%
2006	97,80	89,22	95,36	86,87	101,77	68,55	58,56	62,10	77,61	102,07	106,24	117,53	5%	1 063,67	5%
2007	117,76	105,42	93,78	98,97	92,14	105,10	86,43	87,67	98,21	116,31	116,84	118,03	20%	1 236,66	20%
2008	119,16	107,02	116,17	98,21	106,59	113,54	97,13	89,50	98,77	112,51	102,85	102,60	1%	1 264,06	1%
2009	119,39	115,22	104,59	88,79	117,59	120,36	128,69	119,40	109,83	115,07	128,25	132,10	0%	1 399,27	0%
2010	131,35	121,22	146,24	135,67	130,14	127,00	114,66	137,22	115,93	94,92	126,14	136,35	10%	1 516,85	10%
2011	143,77	-	-	-	-	-	-	-	-	-	-	-	9%	143,77	9%

Export of PE, KT

Year	Jan	Feb	Mar	Apr	May	Jun	Jul	Aug	Sep	Oct	Nov	Dec	mtm ³ ,%	ytm ⁴	ptp ⁵ ,%
2003	40,79	28,77	34,70	30,91	28,43	17,58	12,26	14,21	23,98	34,28	40,67	55,45	13%	362,02	13%
2004	44,36	36,93	20,30	15,96	13,07	12,21	7,04	10,64	18,72	27,42	22,20	20,01	9%	248,88	9%
2005	20,42	20,12	17,90	15,05	10,22	6,36	2,93	6,76	11,51	12,91	10,43	6,46	-54%	141,07	-54%
2006	20,64	17,93	19,22	15,41	11,35	15,62	11,18	2,21	7,25	8,42	9,37	23,40	1%	162,02	1%
2007	16,91	22,26	19,33	10,30	10,15	13,02	10,18	8,60	10,42	23,85	28,68	37,14	-18%	210,85	-18%
2008	27,74	20,42	19,05	11,10	14,84	17,30	17,79	10,37	8,00	8,02	11,89	31,82	64%	198,36	64%
2009	40,50	35,81	29,39	30,49	43,43	39,29	38,99	23,96	23,94	24,03	42,81	55,16	46%	427,79	46%
2010	46,27	34,76	34,29	28,84	18,75	19,64	16,44	18,68	15,19	18,90	19,90	22,61	14%	294,26	14%
2011	12,23	-	-	-	-	-	-	-	-	-	-	-	-74%	12,23	-74%

Import, KT

Year	Jan	Feb	Mar	Apr	May	Jun	Jul	Aug	Sep	Oct	Nov	Dec	mtm ³ ,%	ytm ⁴	ptp ⁵ ,%
2003	5,07	6,62	7,14	7,38	9,13	15,93	24,30	15,51	10,88	11,52	10,17	14,29	-34%	137,94	-34%
2004	9,74	9,70	12,11	10,82	13,84	19,49	20,62	15,78	11,31	10,56	12,38	13,91	92%	160,27	92%
2005	9,40	8,17	11,53	14,35	14,89	18,52	20,87	21,95	20,18	22,67	16,52	23,97	-4%	203,03	-4%
2006	12,90	17,81	24,44	26,94	25,22	29,27	26,77	36,23	35,05	42,42	43,08	40,17	37%	360,31	37%
2007	24,29	32,25	35,26	35,84	43,44	38,52	45,35	46,90	37,60	44,35	36,09	38,66	88%	458,55	88%
2008	27,49	39,59	34,55	39,06	36,54	35,47	30,96	34,52	27,51	39,72	24,12	27,55	13%	397,09	13%
2009	13,94	18,36	27,04	30,97	27,82	25,09	34,89	27,59	31,07	24,29	30,08	36,07	-49%	327,20	-49%
2010	19,11	28,43	32,15	33,73	32,94	35,83	38,35	41,66	43,12	52,13	47,62	52,51	37%	457,56	37%
2011	35,97	-	-	-	-	-	-	-	-	-	-	-	88%	35,97	88%

3 – growth regarding the same month last year (mtm)

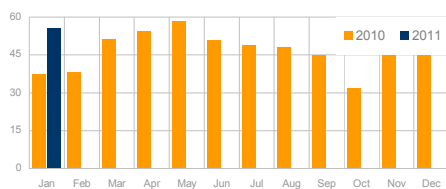
4 – from the beginning of the year up to the analyzed month inclusive (ytm)

5 – growth regarding the same period last year (ptp)

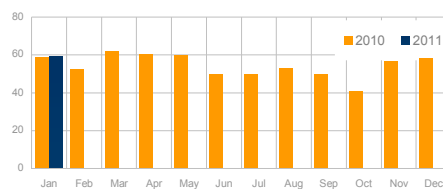
LDPE

General Indexes: LDPE

Consumption, KT

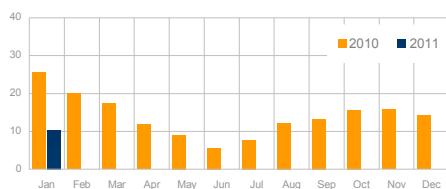


Production, KT

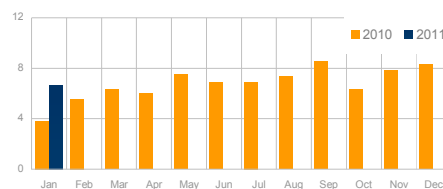


General Indexes: LDPE

Export, KT

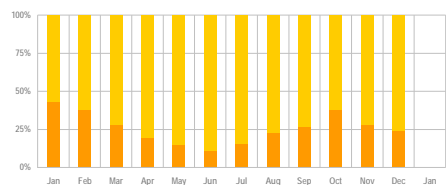


Import, KT

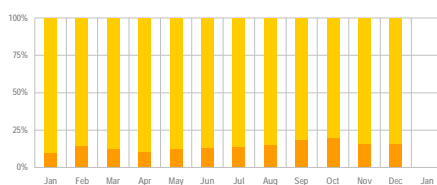


General Indexes: LDPE

Export to Production, %



Import to Consumption, %

LDPE: Consumption⁶, KT

Indexes	Jan 10	Feb 10	Mar 10	Apr 10	May 10	Jun 10	Jul 10	Aug 10	Sep 10	Oct 10	Nov 10	Dec 10	Jan 11	mtm ³ , %	ytm ⁴	ptp ⁵ , %
production	59,09	52,83	62,10	60,39	60,15	49,74	49,86	53,07	49,78	41,05	56,74	58,11	58,92	0%	58,92	0%
Export	25,54	20,08	17,34	11,72	9,04	5,59	7,73	12,21	13,25	15,63	15,80	14,15	10,24	-60%	10,24	-60%
Import	3,80	5,55	6,32	6,00	7,50	6,85	6,92	7,34	8,53	6,31	7,85	8,30	6,61	74%	6,61	74%
Demand	37,36	38,30	51,08	54,67	58,62	51,01	49,06	48,19	45,05	31,73	48,78	52,27	55,30	48%	55,30	48%

3 – growth regarding the same month last year (mtm)

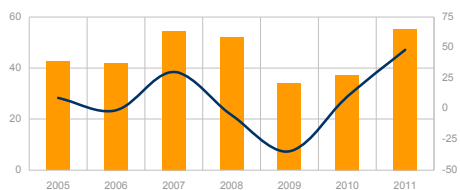
4 – from the beginning of the year up to the analyzed month inclusive (ytm)

5 – growth regarding the same period last year (ptp)

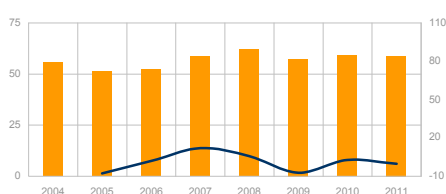
LDPE

General Indexes: LDPE

Consumption⁴ (KT) and Growth⁵ (%)

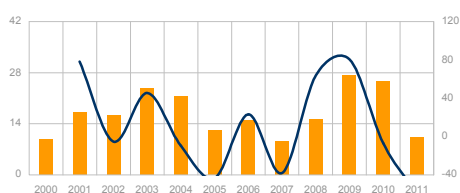


Production⁴ (KT) and Growth⁵ (%)

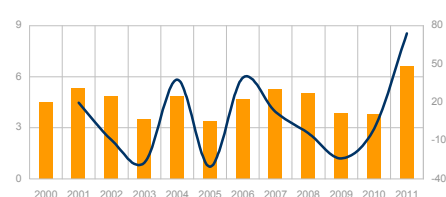


General Indexes: LDPE

Export⁴ (KT) and Growth⁵ (%)

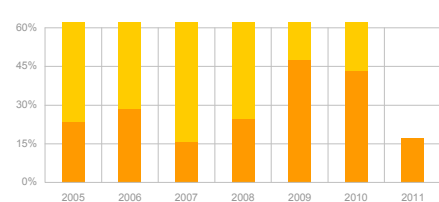


Import⁴ (KT) and Growth⁵ (%)

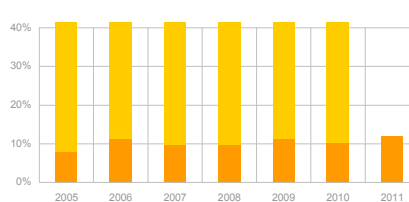


General Indexes: LDPE

Export to Production⁴ (%)

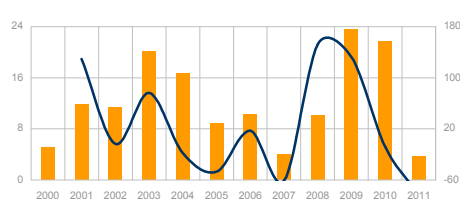


Import to Consumption⁴ (%)

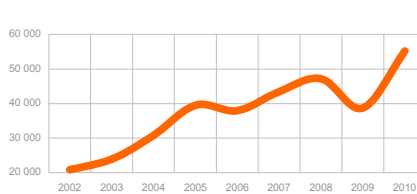


General Indexes: LDPE

Net Export⁴ (KT) and Growth⁵ (%)



LDPE¹ Price, domestic market, CPT, Moscow (RUB/mt)



1 - average arithmetic domestic price, including customs duties and VAT, RUB, starting with the beginning of the year till the analyzed month (average index of no less than five domestic and foreign LDPE brands)

4 - from the beginning of the year up to the analyzed month inclusive (*ytm*)

5 - growth regarding the same period last year (*ptp*)

LDPE

Consumption⁶, KT

Year	Jan	Feb	Mar	Apr	May	Jun	Jul	Aug	Sep	Oct	Nov	Dec	mtm ³ ,%	ytm ⁴	ptp ⁵ ,%
2007	54,60	46,55	51,87	54,46	53,45	48,69	40,15	40,45	50,33	53,39	47,94	48,55	30%	590,42	30%
2008	51,83	51,59	55,28	52,03	53,29	56,01	37,43	44,13	45,06	59,62	47,13	39,16	-5%	592,55	-5%
2009	33,93	32,26	42,09	35,18	37,52	35,97	40,12	39,72	30,98	37,30	38,23	35,34	-35%	438,65	-35%
2010	37,36	38,30	51,08	54,67	58,62	51,01	49,06	48,19	45,05	31,73	48,78	52,27	10%	566,13	10%
2011	55,30	-	-	-	-	-	-	-	-	-	-	-	48%	55,30	48%

Production, KT

Year	Jan	Feb	Mar	Apr	May	Jun	Jul	Aug	Sep	Oct	Nov	Dec	mtm ³ ,%	ytm ⁴	ptp ⁵ ,%
2007	58,62	54,40	57,31	56,54	55,69	50,36	37,83	33,57	47,59	60,77	58,19	62,63	12%	633,52	12%
2008	61,98	57,35	61,70	53,57	56,12	59,97	41,29	44,68	44,57	59,14	50,65	44,08	6%	635,10	6%
2009	57,50	54,80	58,40	53,54	56,51	55,51	53,01	48,95	44,00	53,69	58,20	60,83	-7%	654,93	-7%
2010	59,09	52,83	62,10	60,39	60,15	49,74	49,86	53,07	49,78	41,05	56,74	58,11	3%	652,93	3%
2011	58,92	-	-	-	-	-	-	-	-	-	-	-	0%	58,92	0%

Export⁶, KT

Year	Jan	Feb	Mar	Apr	May	Jun	Jul	Aug	Sep	Oct	Nov	Dec	mtm ³ ,%	ytm ⁴	ptp ⁵ ,%
2003	23,70	19,80	19,37	14,40	16,49	12,26	9,16	4,07	12,98	19,98	17,09	28,42	46%	197,73	46%
2004	21,45	25,28	16,63	10,94	10,42	11,07	6,94	4,21	14,06	17,66	13,49	14,74	-9%	166,90	-9%
2005	12,14	14,96	13,86	12,92	7,65	5,19	1,69	5,26	9,42	9,86	6,69	4,93	-43%	104,56	-43%
2006	14,95	12,56	14,48	12,41	9,02	14,98	10,24	0,78	5,75	6,72	6,87	11,08	23%	119,83	23%
2007	9,27	12,90	11,35	7,17	8,08	7,46	6,07	2,34	3,18	14,08	16,81	22,11	-38%	120,82	-38%
2008	15,18	11,84	13,29	8,87	10,33	11,86	10,15	5,69	4,41	4,69	8,58	11,52	64%	116,42	64%
2009	27,40	27,01	21,38	23,77	24,03	24,56	19,71	13,78	15,78	20,12	25,07	30,22	80%	272,82	80%
2010	25,54	20,08	17,34	11,72	9,04	5,59	7,73	12,21	13,25	15,63	15,80	14,15	-7%	168,08	-7%
2011	10,24	-	-	-	-	-	-	-	-	-	-	-	-60%	10,24	-60%

Import, KT

Year	Jan	Feb	Mar	Apr	May	Jun	Jul	Aug	Sep	Oct	Nov	Dec	mtm ³ ,%	ytm ⁴	ptp ⁵ ,%
2003	3,52	3,39	4,15	4,12	4,16	4,01	6,66	5,50	4,59	3,74	3,89	6,77	-27%	54,50	-27%
2004	4,84	4,10	5,33	3,94	4,03	3,45	4,66	4,28	4,19	3,20	5,01	5,46	38%	52,49	38%
2005	3,36	3,83	4,30	3,85	3,84	4,02	5,57	4,44	4,22	4,88	4,32	6,42	-31%	53,05	-31%
2006	4,68	4,27	5,09	4,43	4,73	4,68	6,23	7,92	4,88	6,00	7,78	9,72	39%	70,41	39%
2007	5,26	5,05	5,91	5,08	5,83	5,78	8,39	9,22	5,92	6,69	6,56	8,03	12%	77,72	12%
2008	5,04	6,09	6,87	7,32	7,50	7,90	6,30	5,13	4,90	5,17	5,06	6,60	-4%	73,87	-4%
2009	3,83	4,46	5,07	5,41	5,04	5,03	6,82	4,55	2,76	3,74	5,10	4,73	-24%	56,54	-24%
2010	3,80	5,55	6,32	6,00	7,50	6,85	6,92	7,34	8,53	6,31	7,85	8,30	-1%	81,27	-1%
2011	6,61	-	-	-	-	-	-	-	-	-	-	-	74%	6,61	74%

3 – growth regarding the same month last year (*mtm*)

4 – from the beginning of the year up to the analyzed month inclusive (*ytm*)

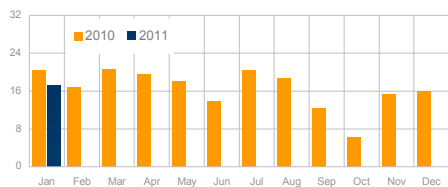
5 – growth regarding the same period last year (*ptp*)

6 – not taking into account deliveries to Belarus

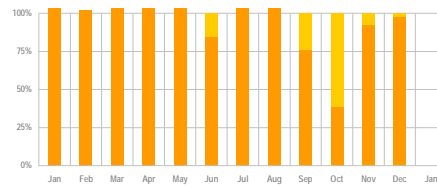
LDPE

Production and Utilization of Production Capacities by Companies

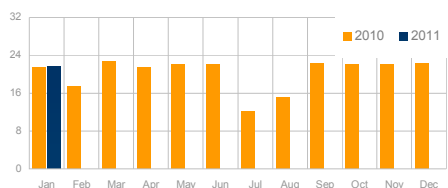
Kazanorgsintez, KT



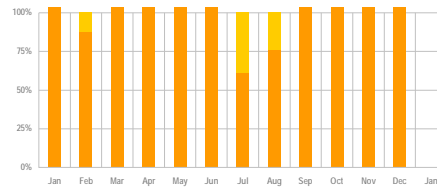
Kazanorgsintez. Utilization of Capacities, %



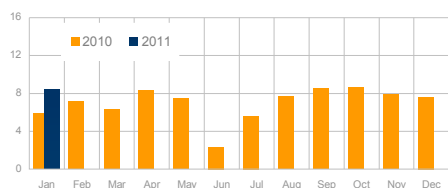
Tomskneftechem, KT



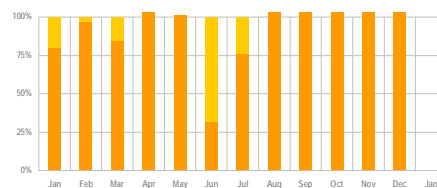
Tomskneftechem. Utilization of Capacities, %



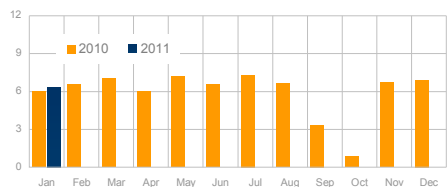
Ufaorgsintez, KT



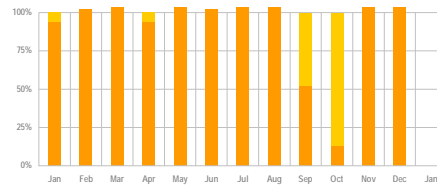
Ufaorgsintez. Utilization of Capacities, %



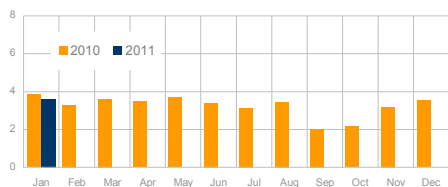
Angarsk Polymer Plant, KT



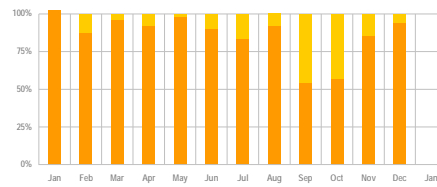
Angarsk Polymer Plant. Utilization of Capacities, %



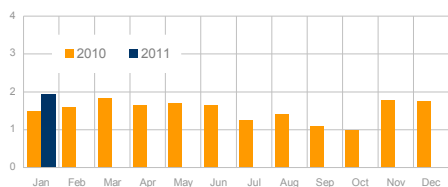
Salavatnefteorgsintez, KT



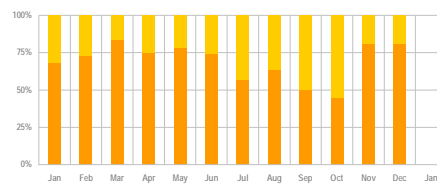
Salavatnefteorgsintez. Utilization of Capacities, %



NeftechemSevilen, KT



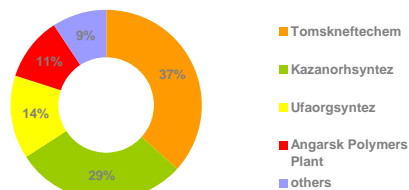
NeftechemSevilen. Utilization of Capacities, %



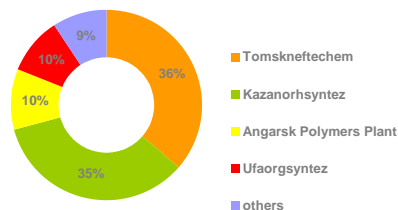
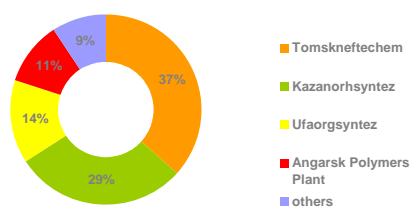
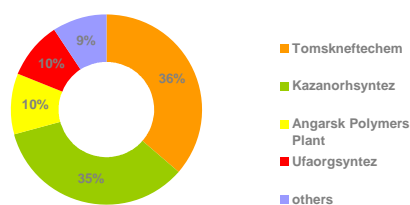
LDPE

Production by Companies, %

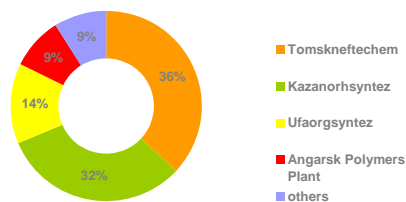
Production in the January 2011, %



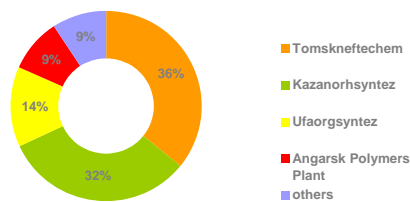
Production in the January 2010, %

Production from the start of 2011⁴, %Production from the start of 2010⁴, %

Production in 2009, %



Production in 2008, %



Production by Companies, KT

Producer	Jan 10	Feb 10	Mar 10	Apr 10	May 10	Jun 10	Jul 10	Aug 10	Sep 10	Oct 10	Nov 10	Dec 10	Jan 11	mtm ³ ,%	ytm ⁴	ptp ⁵ ,%
Tomskneftechem	21,45	17,51	22,77	21,38	21,97	21,96	12,19	15,16	22,35	22,18	22,01	22,27	21,67	1%	21,67	1%
KazanorhsynteZ	20,41	16,72	20,61	19,58	18,12	13,87	20,37	18,70	12,41	6,30	15,20	16,03	17,06	-16%	17,06	-16%
UfaorgsynteZ	5,88	7,17	6,25	8,32	7,45	2,33	5,62	7,70	8,54	8,60	7,86	7,62	8,39	43%	8,39	43%
Angarsk Polymers Plant SNOS (SalavatnefteorgsynteZ)	6,00	6,53	7,02	6,00	7,20	6,55	7,30	6,65	3,35	0,85	6,70	6,90	6,33	5%	6,33	5%
Sevilen	3,85	3,29	3,62	3,47	3,69	3,40	3,13	3,45	2,04	2,15	3,20	3,53	3,55	-8%	3,55	-8%
Sevilen	1,50	1,61	1,84	1,64	1,72	1,64	1,26	1,40	1,10	0,98	1,77	1,77	1,93	29%	1,93	29%
Total	59,09	52,83	62,10	60,39	60,15	49,74	49,86	53,07	49,78	41,05	56,74	58,11	58,92	0%	58,92	0%

3 – growth regarding the same month last year (mtm)

4 – from the beginning of the year up to the analyzed month inclusive (ytm)

5 – growth regarding the same period last year (ptp)

LDPE

Kazanorgsyntez. Production of LDPE, KT

Year	Jan	Feb	Mar	Apr	May	Jun	Jul	Aug	Sep	Oct	Nov	Dec	mtm ³ ,%	ytm ⁴	ptp ⁵ ,%
2007	19,86	17,94	15,93	16,80	15,04	10,82	12,15	17,86	12,59	19,91	18,65	20,45	26%	198,01	26%
2008	19,79	18,28	18,29	13,20	19,34	18,78	17,99	16,69	11,04	19,20	17,63	12,71	0%	202,95	0%
2009	19,80	18,28	17,52	15,86	15,65	18,41	19,76	18,57	10,87	14,38	19,15	19,85	0%	208,10	0%
2010	20,41	16,72	20,61	19,58	18,12	13,87	20,37	18,70	12,41	6,30	15,20	16,03	3%	198,31	3%
2011	17,06	-	-	-	-	-	-	-	-	-	-	-	-16%	17,06	-16%

Tomskneftechem. Production of LDPE, KT

Year	Jan	Feb	Mar	Apr	May	Jun	Jul	Aug	Sep	Oct	Nov	Dec	mtm ³ ,%	ytm ⁴	ptp ⁵ ,%
2007	18,63	17,62	20,01	19,10	19,38	19,90	7,90	2,64	20,13	20,62	19,99	22,39	18%	208,31	18%
2008	22,20	19,69	22,56	21,35	21,87	22,05	6,69	14,12	21,82	20,20	17,63	18,21	19%	228,42	19%
2009	22,22	20,44	21,94	20,73	22,79	20,06	15,27	12,30	21,61	21,10	20,87	22,75	0%	242,10	0%
2010	21,45	17,51	22,77	21,38	21,97	21,96	12,19	15,16	22,35	22,18	22,01	22,27	-3%	243,21	-3%
2011	21,67	-	-	-	-	-	-	-	-	-	-	-	1%	21,67	1%

Ufaorgsyntez. Production of LDPE, KT

Year	Jan	Feb	Mar	Apr	May	Jun	Jul	Aug	Sep	Oct	Nov	Dec	mtm ³ ,%	ytm ⁴	ptp ⁵ ,%
2007	7,82	6,97	8,25	8,28	8,19	6,96	8,21	8,32	7,45	6,53	6,91	7,24	-2%	91,13	-2%
2008	7,32	7,67	8,01	6,98	2,21	6,83	8,08	8,57	8,19	7,59	8,09	7,14	-6%	86,69	-6%
2009	6,86	7,38	8,87	7,53	6,69	6,68	6,96	7,54	7,97	7,23	7,61	7,29	-6%	88,61	-6%
2010	5,88	7,17	6,25	8,32	7,45	2,33	5,62	7,70	8,54	8,60	7,86	7,62	-14%	83,32	-14%
2011	8,39	-	-	-	-	-	-	-	-	-	-	-	43%	8,39	43%

Angarsk Polymer Plant. Production of LDPE, KT

Year	Jan	Feb	Mar	Apr	May	Jun	Jul	Aug	Sep	Oct	Nov	Dec	mtm ³ ,%	ytm ⁴	ptp ⁵ ,%
2007	6,60	6,55	7,10	6,65	7,10	6,91	5,27	0,60	7,15	7,37	6,95	6,85	4%	75,10	4%
2008	6,87	6,55	7,18	6,60	7,05	6,85	3,58	-	2,32	6,35	2,10	2,55	4%	58,00	4%
2009	4,50	3,60	4,35	4,30	5,69	5,33	5,40	5,30	2,80	5,63	5,61	5,59	-34%	58,10	-34%
2010	6,00	6,53	7,02	6,00	7,20	6,55	7,30	6,65	3,35	0,85	6,70	6,90	33%	71,05	33%
2011	6,33	-	-	-	-	-	-	-	-	-	-	-	5%	6,33	5%

3 – growth regarding the same month last year (*mtm*)

4 – from the beginning of the year up to the analyzed month inclusive (*ytm*)

5 – growth regarding the same period last year (*ptp*)

LDPE

Salavatnefteorgsyntez. Production of LDPE, KT

Year	Jan	Feb	Mar	Apr	May	Jun	Jul	Aug	Sep	Oct	Nov	Dec	mtm ³ ,%	ytm ⁴	ptp ⁵ ,%
2007	3,83	3,78	4,25	3,94	4,18	4,08	3,90	4,13	0,22	4,62	3,91	3,95	-12%	44,79	-12%
2008	4,03	3,81	3,97	3,73	3,87	3,88	3,86	4,04	0,56	3,99	3,92	2,92	5%	42,60	5%
2009	3,29	3,38	3,87	3,35	3,89	3,69	3,94	3,79	0,55	3,81	3,54	3,83	-18%	40,96	-18%
2010	3,85	3,29	3,62	3,47	3,69	3,40	3,13	3,45	2,04	2,15	3,20	3,53	17%	38,83	17%
2011	3,55	-	-	-	-	-	-	-	-	-	-	-	-8%	3,55	-8%

NeftechemSevilen. Production of LDPE, KT

Year	Jan	Feb	Mar	Apr	May	Jun	Jul	Aug	Sep	Oct	Nov	Dec	mtm ³ ,%	ytm ⁴	ptp ⁵ ,%
2007	1,89	1,53	1,76	1,78	1,79	1,70	0,41	0,01	0,05	1,72	1,78	1,75	-9%	16,18	-9%
2008	1,76	1,33	1,69	1,72	1,78	1,58	1,09	1,25	0,63	1,80	1,27	0,55	-7%	16,45	-7%
2009	0,82	1,73	1,84	1,77	1,80	1,33	1,68	1,45	0,19	1,53	1,42	1,52	-53%	17,07	-53%
2010	1,50	1,61	1,84	1,64	1,72	1,64	1,26	1,40	1,10	0,98	1,77	1,77	82%	18,22	82%
2011	1,93	-	-	-	-	-	-	-	-	-	-	-	29%	1,93	29%

3 – growth regarding the same month last year (*mtm*)

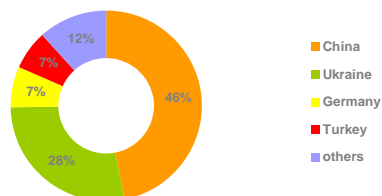
4 – from the beginning of the year up to the analyzed month inclusive (*ytm*)

5 – growth regarding the same period last year (*ptp*)

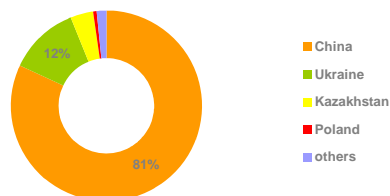
LDPE

Export⁶ by Countries, %

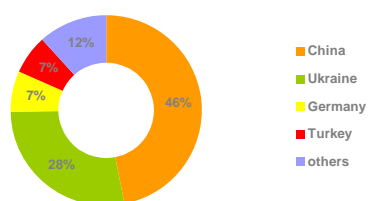
Export by Countries in the January 2011, %



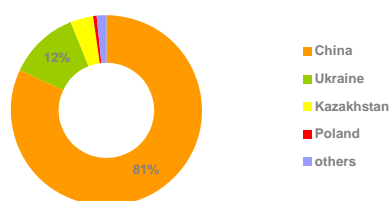
Export by Countries in the January 2010, %



Export by Countries from the start of 2011⁴, %

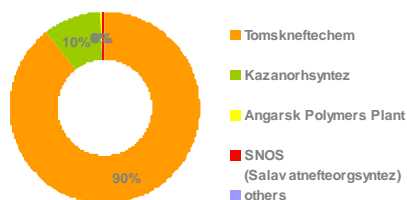


Export by Countries from the start of 2010⁴, %

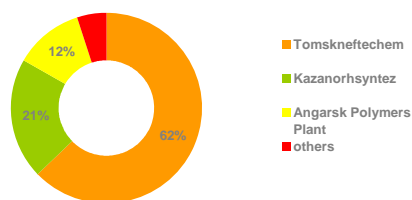


Export⁶ by Companies, %

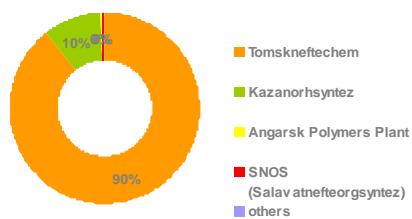
Export by Companies in the January 2011, %



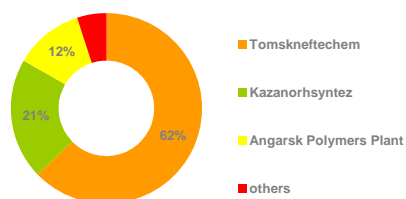
Export by Companies in the January 2010, %



Export by Companies from the start of 2011⁴, %



Export by Companies from the start of 2010⁴, %



4 – from the beginning of the year up to the analyzed month inclusive (ytm)

6 – not taking into account deliveries to Belarus

LDPE

Export⁶ by Countries, KT

Country	Jan 10	Feb 10	Mar 10	Apr 10	May 10	Jun 10	Jul 10	Aug 10	Sep 10	Oct 10	Nov 10	Dec 10	Jan 11	mtm ³ ,%	ytm ⁴	ptp ⁵ ,%
China	20,95	16,44	12,52	6,10	4,46	1,94	2,10	6,61	9,28	10,26	9,23	6,27	4,79	-77%	4,79	-77%
Ukraine	3,02	2,36	3,02	2,92	2,11	1,37	2,90	3,61	2,74	3,63	3,18	4,47	2,86	-5%	2,86	-5%
Kazakhstan	0,99	0,65	1,32	1,68	1,48	1,26	2,02	0,76	0,51	0,72	0,23	0,27	-	-	-	-
Germany	-	0,11	0,01	-	-	-	-	0,30	-	0,50	0,60	0,45	0,70	-	0,70	-
Bulgaria	-	-	0,08	0,37	0,42	0,63	-	0,20	0,45	-	0,10	0,10	0,04	-	0,04	-
Uzbekistan	0,10	-	0,14	0,14	0,15	0,24	0,38	0,19	0,04	0,14	0,43	0,28	0,14	47%	0,14	47%
India	-	-	-	-	-	-	-	-	-	-	0,65	0,78	-	-	-	-
others	0,48	0,51	0,24	0,51	0,40	0,15	0,32	0,54	0,24	0,38	1,38	1,53	1,70	255%	1,70	255%
Total	25,54	20,08	17,34	11,72	9,04	5,59	7,73	12,21	13,25	15,63	15,80	14,15	10,24	-60%	10,24	-60%

Export⁶ by Companies, KT

Producer	Jan 10	Feb 10	Mar 10	Apr 10	May 10	Jun 10	Jul 10	Aug 10	Sep 10	Oct 10	Nov 10	Dec 10	Jan 11	mtm ³ ,%	ytm ⁴	ptp ⁵ ,%
Tomsknftechem	16,02	13,71	10,40	5,92	5,79	3,07	3,22	6,25	10,06	13,13	11,16	9,12	9,20	-43%	9,20	-43%
Kazanorgsyntez	5,25	2,96	3,02	2,75	1,82	1,35	3,82	2,89	1,06	0,95	2,07	3,70	1,02	-81%	1,02	-81%
Angarsk Polymers Plant	3,00	3,02	3,45	2,50	1,02	1,00	0,60	3,02	2,04	1,50	2,52	1,19	0,02	-99%	0,02	-99%
SNOS	1,25	0,34	0,35	0,45	0,25	0,10	0,05	0,05	0,05	-	0,05	0,05	-	-	-	-
Sevilen	0,01	-	-	-	-	-	-	-	-	-	-	-	-	-	-	-
others	0,02	0,04	0,13	0,10	0,15	0,07	0,04	-	0,04	0,04	-	0,09	-	-	-	-
Total	25,54	20,08	17,34	11,72	9,04	5,59	7,73	12,21	13,25	15,63	15,80	14,15	10,24	-60%	10,24	-60%

Export⁶. Kazanorgsyntez, KT

Year	Jan	Feb	Mar	Apr	May	Jun	Jul	Aug	Sep	Oct	Nov	Dec	mtm ³ ,%	ytm ⁴	ptp ⁵ ,%
2003	3,46	2,24	3,90	4,54	5,28	5,13	6,40	2,10	2,77	6,31	6,57	6,66	128%	55,36	128%
2004	4,67	9,00	6,09	3,11	2,49	1,75	1,15	1,46	3,47	5,37	2,62	3,61	35%	44,80	35%
2005	4,64	4,09	2,46	1,63	1,06	0,62	0,84	5,16	2,19	2,68	2,66	0,59	-1%	28,61	-1%
2006	5,82	5,22	2,56	4,61	4,55	3,59	3,42	0,58	0,84	1,21	1,77	4,91	25%	39,08	25%
2007	2,84	5,17	5,48	4,21	3,91	2,04	2,38	1,89	1,43	5,49	6,64	9,32	-51%	50,81	-51%
2008	4,36	4,37	4,44	1,61	3,06	4,97	4,75	1,26	2,44	2,95	3,73	6,68	53%	44,61	53%
2009	4,93	4,01	3,04	3,82	4,34	4,98	4,21	1,88	1,39	1,74	5,50	6,44	13%	46,27	13%
2010	5,25	2,96	3,02	2,75	1,82	1,35	3,82	2,89	1,06	0,95	2,07	3,70	6%	31,63	6%
2011	1,02	-	-	-	-	-	-	-	-	-	-	-	-81%	1,02	-81%

Export⁶. Tomsknftechem, KT

Year	Jan	Feb	Mar	Apr	May	Jun	Jul	Aug	Sep	Oct	Nov	Dec	mtm ³ ,%	ytm ⁴	ptp ⁵ ,%
2003	10,87	7,88	8,45	5,18	6,05	4,42	0,36	1,35	6,15	6,83	4,37	8,92	51%	70,83	51%
2004	8,19	7,66	5,68	4,68	4,67	6,07	0,54	1,82	5,79	8,05	5,90	6,29	-25%	65,36	-25%
2005	3,69	5,44	6,81	7,57	3,37	4,45	0,75	-	6,78	6,53	3,16	4,00	-55%	52,56	-55%
2006	5,13	5,26	7,51	5,11	3,24	10,08	4,95	-	4,54	4,44	4,50	4,37	39%	59,15	39%
2007	4,23	5,30	1,96	1,53	3,61	5,24	3,33	-	1,67	7,43	8,91	10,86	-18%	54,05	-18%
2008	8,86	6,21	7,15	7,15	7,14	6,81	5,08	3,98	1,86	1,28	3,81	2,69	110%	62,03	110%
2009	18,71	17,85	16,00	17,35	18,14	17,32	12,43	8,76	13,24	14,94	15,01	19,27	111%	189,02	111%
2010	16,02	13,71	10,40	5,92	5,79	3,07	3,22	6,25	10,06	13,13	11,16	9,12	-14%	107,86	-14%
2011	9,20	-	-	-	-	-	-	-	-	-	-	-	-43%	9,20	-43%

3 – growth regarding the same month last year (mtm)

4 – from the beginning of the year up to the analyzed month inclusive (ytm)

5 – growth regarding the same period last year (ptp)

6 – not taking into account deliveries to Belarus

LDPE

Export⁶. Ufaorgsyntez, KT

Year	Jan	Feb	Mar	Apr	May	Jun	Jul	Aug	Sep	Oct	Nov	Dec	mtm ³ ,%	ytm ⁴	ptp ⁵ ,%
2003	2,27	3,94	1,53	0,44	0,02	0,03	0,02	0,02	0,03	-	-	-	-	8,31	-
2004	0,52	0,27	0,14	-	-	-	-	0,83	0,13	-	-	-	-77%	1,87	-77%
2005	0,00	-	0,01	-	-	-	-	0,02	-	-	-	-	-	0,03	-
2006	-	0,04	0,10	0,01	-	0,07	-	0,04	-	-	-	0,04	-	0,31	-
2007	-	0,09	0,09	0,09	0,08	0,09	-	-	0,00	0,15	-	-	-	0,58	-
2008	0,05	-	-	-	-	-	0,10	0,01	-	0,10	-	-	-	0,24	-
2009	0,27	1,37	-	0,08	-	-	-	0,06	-	-	0,04	0,16	481%	1,99	481%
2010	-	-	-	-	0,01	-	-	-	-	-	-	-	-%	0,01	-
2011	-	-	-	-	-	-	-	-	-	-	-	-	-	-	-

Export⁶. Angarsk Polymer Plant, KT

Year	Jan	Feb	Mar	Apr	May	Jun	Jul	Aug	Sep	Oct	Nov	Dec	mtm ³ ,%	ytm ⁴	ptp ⁵ ,%
2003	4,50	2,50	2,85	1,40	3,30	1,55	1,55	0,50	2,80	5,25	3,85	9,95	-40%	40,00	-40%
2004	5,75	6,35	3,60	2,16	2,88	1,99	4,64	0,03	2,45	2,67	3,75	2,80	28%	39,06	28%
2005	2,01	4,00	3,21	2,80	3,00	-	0,06	-	-	0,20	0,25	0,05	-65%	15,58	-65%
2006	2,23	0,50	2,71	1,55	0,50	0,58	1,00	0,10	0,33	1,00	0,50	0,40	11%	11,40	11%
2007	-	1,05	2,00	-	-	-	-	-	-	-	0,01	0,01	-	3,06	-
2008	0,01	-	1,52	0,02	0,02	0,02	0,04	-	-	-	0,02	-	-	1,65	-
2009	1,00	2,00	1,02	1,02	1,25	1,54	2,50	2,00	1,00	2,50	3,52	2,00	-	21,35	-
2010	3,00	3,02	3,45	2,50	1,02	1,00	0,60	3,02	2,04	1,50	2,52	1,19	200%	24,86	200%
2011	0,02	-	-	-	-	-	-	-	-	-	-	-	-99%	0,02	-99%

Export⁶. Salavatnefteorgsyntez, KT

Year	Jan	Feb	Mar	Apr	May	Jun	Jul	Aug	Sep	Oct	Nov	Dec	mtm ³ ,%	ytm ⁴	ptp ⁵ ,%
2003	2,32	2,39	2,08	1,95	1,05	0,97	0,82	-	1,17	1,59	2,27	2,88	-	19,51	-
2004	2,28	1,98	1,12	0,95	0,39	1,25	0,51	0,02	2,16	1,51	1,07	1,93	-2%	15,15	-2%
2005	1,75	1,37	1,33	0,86	0,21	0,07	-	0,04	0,43	0,41	0,60	0,26	-23%	7,34	-23%
2006	1,76	1,51	1,55	1,12	0,69	0,59	0,83	-	-	-	-	1,30	1%	9,34	1%
2007	2,16	1,25	1,80	1,20	0,38	-	0,29	0,29	-	0,91	1,20	1,87	23%	11,36	23%
2008	1,82	1,20	0,05	-	-	-	0,05	0,34	-	0,29	0,91	2,16	-16%	6,82	-16%
2009	2,45	1,73	1,20	1,25	0,29	0,67	0,48	1,01	0,05	0,91	0,96	2,26	34%	13,25	34%
2010	1,25	0,34	0,35	0,45	0,25	0,10	0,05	0,05	0,05	-	0,05	0,05	-49%	2,98	-49%
2011	-	-	-	-	-	-	-	-	-	-	-	-	-	-	-

3 – growth regarding the same month last year (*mtm*)

4 – from the beginning of the year up to the analyzed month inclusive (*ytm*)

5 – growth regarding the same period last year (*ptp*)

6 – not taking into account deliveries to Belarus

LDPE

Export⁶ by Countries. Kazanorgsyntez, KT

Country	Jan 10	Feb 10	Mar 10	Apr 10	May 10	Jun 10	Jul 10	Aug 10	Sep 10	Oct 10	Nov 10	Dec 10	Jan 11	mtm ³ ,%	ytm ⁴	ptp ⁵ ,%
Ukraine	1,79	1,60	1,98	1,32	0,83	0,62	2,20	1,97	0,90	0,86	1,63	2,45	0,86	-52%	0,86	-52%
Kazakhstan	0,96	0,59	0,78	0,93	0,73	0,48	1,26	0,36	0,10	-	-	-	-	-	-	-
China	1,92	0,19	-	-	-	-	-	-	-	-	-	0,58	-	-	-	-
Uzbekistan	0,10	-	0,10	0,14	0,14	0,19	0,29	0,19	-	0,05	0,38	0,19	0,10	-	0,10	-
Poland	0,16	0,10	0,00	0,12	0,02	-	0,02	0,18	0,06	0,04	-	-	0,06	-63%	0,06	-63%
Lithuania	0,05	0,10	-	0,10	0,05	-	-	0,19	-	-	-	0,10	-	-	-	-
Finland	-	0,19	-	-	-	-	-	-	-	-	-	0,38	-	-	-	-
Latvia	0,14	-	0,14	0,05	0,05	-	-	-	-	-	-	-	-	-	-	-
Serbia and Montenegro	0,13	0,11	-	-	-	-	-	-	-	-	-	-	-	-	-	-
others	-	0,09	0,01	0,10	-	0,05	0,05	-	-	-	0,05	-	-	-	-	-
Total	5,25	2,96	3,02	2,75	1,82	1,35	3,82	2,89	1,06	0,95	2,07	3,70	1,02	-81%	1,02	-81%

Export⁶ by Countries. Tomskneftechem, KT

Country	Jan 10	Feb 10	Mar 10	Apr 10	May 10	Jun 10	Jul 10	Aug 10	Sep 10	Oct 10	Nov 10	Dec 10	Jan 11	mtm ³ ,%	ytm ⁴	ptp ⁵ ,%
China	15,27	12,91	9,09	3,61	3,46	0,94	1,54	3,62	7,28	8,76	6,74	4,54	4,79	-69%	4,79	-69%
Ukraine	0,75	0,76	0,74	1,30	1,14	0,74	0,70	1,64	1,82	2,77	1,55	2,00	2,00	167%	2,00	167%
Kazakhstan	-	0,04	0,48	0,64	0,63	0,72	0,72	0,40	0,40	0,72	0,23	0,27	-	-	-	-
Germany	-	-	-	-	-	-	-	0,30	-	0,50	0,60	0,45	0,70	-	0,70	-
Bulgaria	-	-	0,08	0,37	0,42	0,63	-	0,20	0,45	-	0,10	0,10	0,04	-	0,04	-
India	-	-	-	-	-	-	-	-	-	-	0,65	0,78	-	-	-	-
Vietnam	-	-	-	-	-	-	-	-	-	0,20	0,50	0,25	0,20	-	0,20	-
others	-	-	-	-	0,14	0,04	0,25	0,09	0,11	0,19	0,80	0,73	1,47	-	1,46	-
Total	16,02	13,71	10,40	5,92	5,79	3,07	3,22	6,25	10,06	13,13	11,16	9,13	9,20	-43%	9,20	-43%

Export⁶ by Countries. Ufaorgsyntez, KT

Country	Jan 10	Feb 10	Mar 10	Apr 10	May 10	Jun 10	Jul 10	Aug 10	Sep 10	Oct 10	Nov 10	Dec 10	Jan 11	mtm ³ ,%	ytm ⁴	ptp ⁵ ,%
Uzbekistan	-	-	-	-	0,01	-	-	-	-	-	-	-	-	-	-	-
Germany	-	-	-	-	-	-	-	-	-	-	-	-	-	-	-	-
Total	-	-	-	-	0,01	-	-	-	-	-	-	-	-	-	-	-

3 – growth regarding the same month last year (*mtm*)

4 – from the beginning of the year up to the analyzed month inclusive (*ytm*)

5 – growth regarding the same period last year (*ptp*)

6 – not taking into account deliveries to Belarus

LDPE

Export⁶ by Countries. Angarsk Polymer Plant, KT

Country	Jan 10	Feb 10	Mar 10	Apr 10	May 10	Jun 10	Jul 10	Aug 10	Sep 10	Oct 10	Nov 10	Dec 10	Jan 11	mtm ³ ,%	ytm ⁴	ptp ⁵ ,%
China	3,00	3,00	3,43	2,50	1,00	1,00	0,56	3,00	2,00	1,50	2,50	1,15	-	-	-	-
Mongolia	-	0,02	0,02	-	0,02	-	0,04	0,02	0,04	-	0,02	0,04	0,02	-	0,02	-
Total	3,00	3,02	3,45	2,50	1,02	1,00	0,60	3,02	2,04	1,50	2,52	1,19	0,02	-99%	0,02	-99%

Export⁶ by Countries. Salavatnefteorgsyntez, KT

Country	Jan 10	Feb 10	Mar 10	Apr 10	May 10	Jun 10	Jul 10	Aug 10	Sep 10	Oct 10	Nov 10	Dec 10	Jan 11	mtm ³ ,%	ytm ⁴	ptp ⁵ ,%
Ukraine	0,48	-	0,30	0,30	0,15	-	-	-	-	-	-	-	-	-	-	-
China	0,77	0,34	-	-	-	-	-	-	-	-	-	-	-	-	-	-
Kyrgyzstan	-	-	0,05	0,15	0,10	0,10	0,05	0,05	0,05	-	0,05	0,05	-	-	-	-
Total	1,25	0,34	0,35	0,45	0,25	0,10	0,05	0,05	0,05	-	0,05	0,05	-	-	-	-

3 – growth regarding the same month last year (*mtm*)

4 – from the beginning of the year up to the analyzed month inclusive (*ytm*)

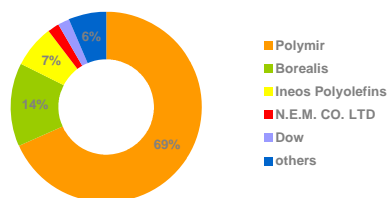
5 – growth regarding the same period last year (*ptp*)

6 – not taking into account deliveries to Belarus

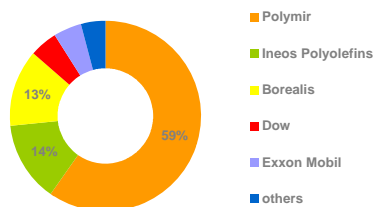
LDPE

Import by Producers, %

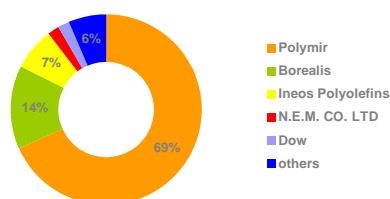
Import by Producers in the January 2011, %



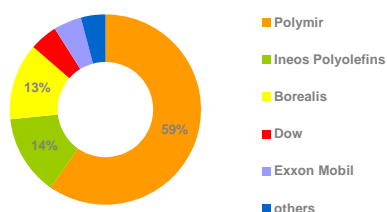
Import by Producers in the January 2010, %



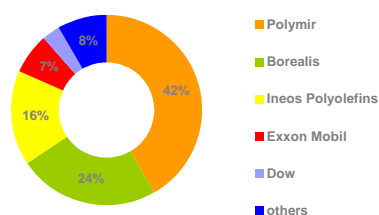
Import by Producers from the start of 2011⁴, %



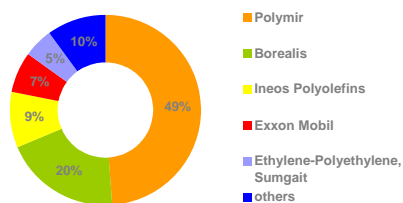
Import by Producers from the start of 2010⁴, %



Import in Producers 2009, %



Import in Producers 2008, %



Import by Producers, KT

Producer	Jan 10	Feb 10	Mar 10	Apr 10	May 10	Jun 10	Jul 10	Aug 10	Sep 10	Oct 10	Nov 10	Dec 10	Jan 11	mtm ³ , %	ytm ⁴	ptp ⁵ , %
Polymir	2,27	2,28	2,50	3,26	3,99	4,07	3,80	3,84	5,20	2,65	4,38	4,51	4,51	99%	4,51	99%
Borealis	0,49	0,84	1,11	0,54	1,13	1,05	1,08	1,34	1,14	1,37	1,12	1,17	0,94	92%	0,94	92%
Ineos Polyolefins	0,53	1,40	1,30	1,30	1,38	0,56	0,64	0,64	1,20	0,90	1,07	1,13	0,48	-9%	0,48	-9%
Exxon Mobil	0,18	0,31	0,47	0,37	0,44	0,27	0,58	0,40	0,44	0,52	0,43	0,70	0,09	-50%	0,09	-50%
Dow	0,19	0,16	0,16	0,11	0,10	0,17	0,26	0,36	0,14	0,27	0,18	0,06	0,12	-35%	0,12	-35%
Sabic	0,02	0,14	0,40	0,13	0,15	0,19	0,17	0,29	0,12	0,15	0,02	0,05	0,07	391%	0,07	391%
LyondellBasell	0,05	0,19	0,20	0,09	0,07	0,15	0,11	0,07	0,06	0,10	0,19	0,15	0,07	58%	0,07	58%
MPB	-	-	0,02	0,02	0,02	0,23	-	0,17	-	0,11	-	0,13	-	-	-	-
others	0,09	0,22	0,17	0,17	0,21	0,16	0,28	0,22	0,22	0,26	0,46	0,41	0,32	253%	0,10	75%
Total	3,80	5,55	6,32	6,00	7,50	6,85	6,92	7,34	8,53	6,31	7,85	8,30	6,61	74%	6,61	74%

3 – growth regarding the same month last year (*mtm*)

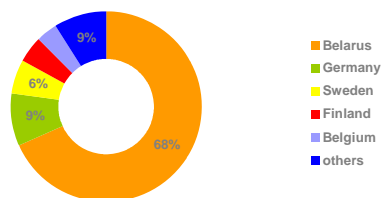
4 – from the beginning of the year up to the analyzed month inclusive (*ytm*)

5 – growth regarding the same period last year (*ptp*)

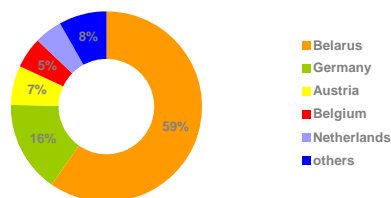
LDPE

Import by Countries, %

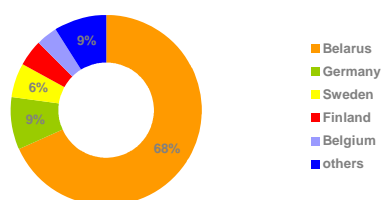
Import by countries in the January 2011, %



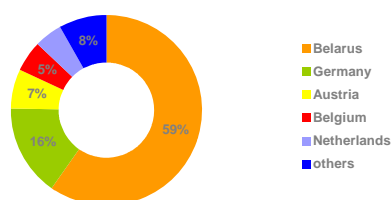
Import by countries in the January 2010, %



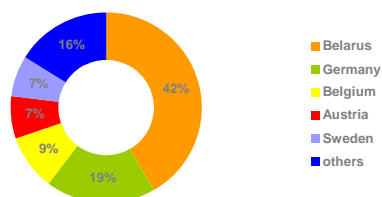
Import by countries from the start of 2011⁴, %



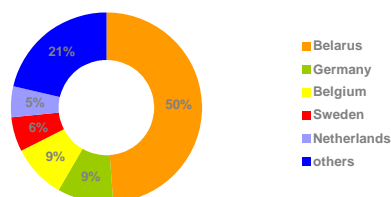
Import by countries from the start of 2010⁴, %



Import in 2009, %



Import in 2008, %



Import by Countries, KT

Country	Jan 10	Feb 10	Mar 10	Apr 10	May 10	Jun 10	Jul 10	Aug 10	Sep 10	Oct 10	Nov 10	Dec 10	Jan 11	mtm ³ , %	ytm ⁴	ptp ⁵ , %
Belarus	2,27	2,28	2,50	3,26	3,99	4,07	3,80	3,84	5,20	2,65	4,38	4,51	4,51	99%	4,51	99%
Germany	0,59	1,69	1,63	1,47	1,52	0,83	0,92	0,89	1,31	1,12	1,39	1,29	0,60	1%	0,60	1%
Belgium	0,20	0,39	0,70	0,56	0,91	0,52	0,66	0,85	0,64	0,81	0,47	0,84	0,24	22%	0,24	22%
Austria	0,26	0,42	0,41	0,15	0,36	0,48	0,51	0,29	0,34	0,49	0,54	0,27	0,16	-38%	0,16	-38%
Sweden	0,04	0,02	0,07	0,08	0,22	0,22	0,25	0,59	0,45	0,34	0,45	0,62	0,38	-	0,38	-
Finland	0,17	0,31	0,36	0,11	0,07	0,08	0,24	0,14	0,18	0,34	0,11	0,16	0,29	73%	0,29	73%
Netherlands	0,18	0,20	0,41	0,14	0,18	0,26	0,17	0,36	0,16	0,19	0,05	0,06	0,10	-45%	0,10	-45%
Italy	-	-	0,02	0,02	0,02	0,23	-	0,17	0,03	0,18	0,08	0,13	-	-	-	-
South Korea	0,01	0,11	0,09	0,04	0,15	0,03	-	0,06	0,11	0,04	0,06	-	0,13	-	0,13	-
France	0,02	0,02	0,02	0,02	0,04	0,02	-	0,04	0,00	-	0,02	0,29	0,10	539%	0,10	539%
others	0,07	0,08	0,12	0,16	0,02	0,11	0,38	0,11	0,10	0,15	0,33	0,12	0,10	44%	0,10	44%
Total	3,80	5,55	6,32	6,00	7,50	6,85	6,92	7,34	8,53	6,31	7,85	8,30	6,61	74%	6,61	74%

3 – growth regarding the same month last year (*mtm*)

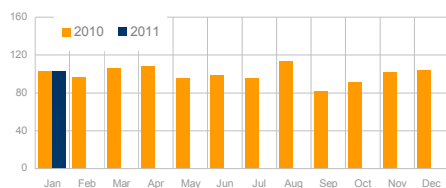
4 – from the beginning of the year up to the analyzed month inclusive (*ytm*)

5 – growth regarding the same period last year (*ptp*)

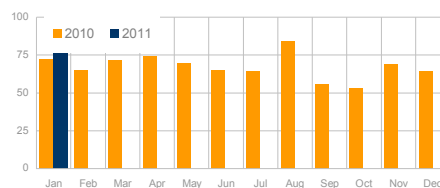
HDPE

General Indexes: HDPE

Consumption, KT

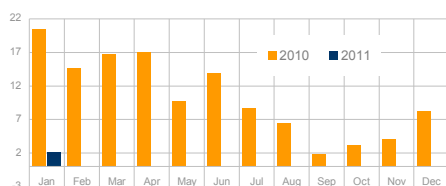


Production, KT

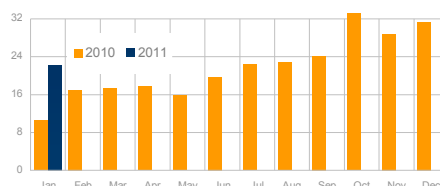


General Indexes: HDPE

Export, KT

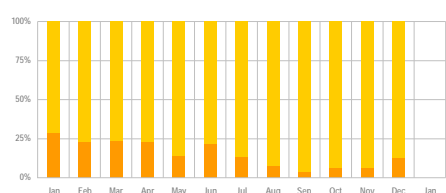


Import, KT

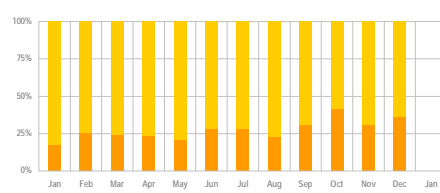


General Indexes: HDPE

Export to Production, %



Import to Consumption, %



Consumption, KT

Indexes	Jan 10	Feb 10	Mar 10	Apr 10	May 10	Jun 10	Jul 10	Aug 10	Sep 10	Oct 10	Nov 10	Dec 10	Jan 11	mtm ³ ,%	ytm ⁴	ptp ⁵ ,%
production	72,00	65,03	71,75	73,94	69,99	64,98	64,80	84,15	55,65	52,98	69,40	64,37	78,10	8%	78,10	8%
Import	10,57	16,98	17,30	17,73	15,84	19,71	22,33	22,81	24,16	35,14	28,79	31,40	22,21	110%	22,21	110%
Export	20,43	14,68	16,77	17,03	9,71	13,95	8,66	6,46	1,90	3,27	4,10	8,28	1,99	-90%	1,99	-90%
Demand	62,13	67,33	72,28	74,65	76,12	70,74	78,46	100,5	77,91	84,85	94,09	87,49	98,33	58%	98,33	58%

3 – growth regarding the same month last year (mtm)

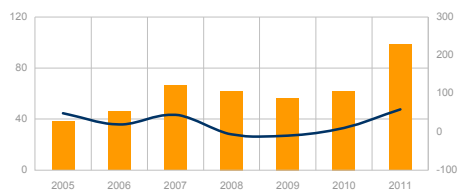
4 – from the beginning of the year up to the analyzed month inclusive (ytm)

5 – growth regarding the same period last year (ptp)

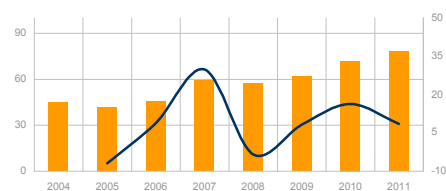
HDPE

General Indexes: HDPE

Consumption⁴ (KT) and Growth⁵ (%)

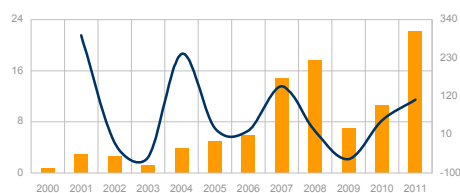


Production⁴ (KT) and Growth⁵ (%)

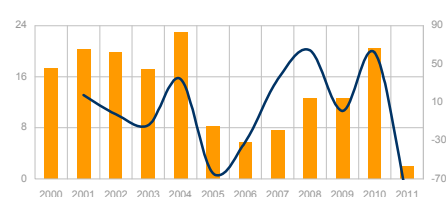


General Indexes: HDPE

Import⁴ (KT) and Growth⁵ (%)

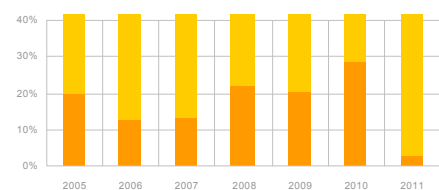


Export⁴ (KT) and Growth⁵ (%)

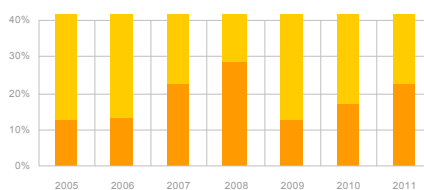


General Indexes: HDPE

Export to Production⁴ (%)

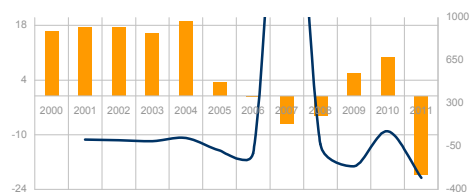


Import to Consumption⁴ (%)

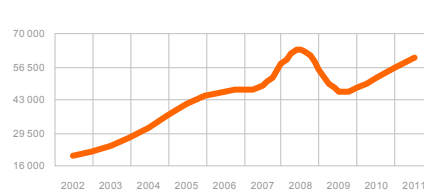


General Indexes: HDPE

Net Export⁴ (KT) and Growth⁵ (%)



HDPE¹ Price, domestic market, CPT, Moscow (RUB/mt)



1 – average arithmetic domestic price, including customs duties and VAT, RUB, starting with the beginning of the year till the analyzed month (average index of no less than five domestic and foreign HDPE brands)

4 – from the beginning of the year up to the analyzed month inclusive (*ytm*)

5 – growth regarding the same period last year (*ptp*)

6 – not taking into account deliveries to Belarus

HDPE

Consumption⁶, KT

Year	Jan	Feb	Mar	Apr	May	Jun	Jul	Aug	Sep	Oct	Nov	Dec	mtm ³ ,%	ytm ⁴	ptp ⁵ ,%
2007	66,26	63,50	51,18	63,48	65,10	77,08	75,28	77,19	67,31	74,44	67,56	60,08	45%	808,47	45%
2008	62,20	67,79	63,72	65,81	66,74	66,55	62,50	61,08	68,05	76,12	56,65	52,97	-6%	770,18	-6%
2009	56,25	54,93	53,24	43,48	56,14	60,41	64,82	71,69	71,94	70,89	69,76	62,82	-10%	736,37	-10%
2010	62,13	67,33	72,28	74,65	76,12	70,74	78,46	100,5	77,91	84,85	94,09	87,49	10%	946,54	10%
2011	98,33	-	-	-	-	-	-	-	-	-	-	-	58%	98,33	58%

Production, KT

Year	Jan	Feb	Mar	Apr	May	Jun	Jul	Aug	Sep	Oct	Nov	Dec	mtm ³ ,%	ytm ⁴	ptp ⁵ ,%
2007	59,14	51,02	36,47	42,43	36,45	54,74	48,60	54,10	50,62	55,54	56,70	53,52	30%	599,31	30%
2008	57,18	49,67	48,85	44,54	50,42	51,04	52,13	44,82	54,19	53,38	45,88	57,60	-3%	609,71	-3%
2009	61,89	53,91	46,19	33,28	61,08	64,85	63,70	67,28	60,79	61,12	70,05	63,80	8%	707,93	8%
2010	72,00	65,03	71,75	73,94	69,99	64,98	64,80	84,15	55,65	52,98	69,40	64,37	16%	809,04	16%
2011	78,10	-	-	-	-	-	-	-	-	-	-	-	8%	78,10	8%

Export⁶, KT

Year	Jan	Feb	Mar	Apr	May	Jun	Jul	Aug	Sep	Oct	Nov	Dec	mtm ³ ,%	ytm ⁴	ptp ⁵ ,%
2003	17,09	8,97	15,32	16,51	11,94	5,32	3,10	10,13	11,00	14,30	23,58	27,03	-14%	164,29	-14%
2004	22,91	11,65	3,67	5,02	2,65	1,14	0,09	6,44	4,67	9,76	8,71	5,27	34%	81,97	34%
2005	8,28	5,16	4,05	2,14	2,57	1,17	1,24	1,49	2,10	3,04	3,73	1,53	-64%	36,50	-64%
2006	5,69	5,37	4,74	3,00	2,34	0,64	0,94	1,43	1,51	1,70	2,50	12,33	-31%	42,19	-31%
2007	7,64	9,36	7,98	3,13	2,08	5,54	4,11	6,26	7,24	9,78	11,87	15,01	34%	89,99	34%
2008	12,56	8,57	5,76	2,14	4,51	5,34	7,50	4,69	3,58	3,34	3,31	19,38	64%	80,68	64%
2009	12,65	8,59	7,99	6,73	19,39	14,72	15,45	10,14	8,05	3,90	17,74	22,43	1%	147,76	1%
2010	20,43	14,68	16,77	17,03	9,71	13,95	8,66	6,46	1,90	3,27	4,10	8,28	62%	125,25	62%
2011	1,99	-	-	-	-	-	-	-	-	-	-	-	-90%	1,99	-90%

Import, KT

Year	Jan	Feb	Mar	Apr	May	Jun	Jul	Aug	Sep	Oct	Nov	Dec	mtm ³ ,%	ytm ⁴	ptp ⁵ ,%
2003	1,11	2,05	2,34	2,20	3,91	10,63	15,51	8,44	5,45	6,85	5,12	6,26	-55%	69,86	-55%
2004	3,79	4,36	5,40	4,97	7,99	13,04	13,41	9,11	5,69	5,66	5,18	6,43	241%	85,03	241%
2005	4,87	2,73	4,87	6,72	8,21	10,69	12,29	15,00	13,02	14,49	9,18	13,54	29%	115,62	29%
2006	5,92	9,82	14,74	18,86	15,71	19,29	16,96	22,91	24,34	29,92	28,32	23,06	22%	229,85	22%
2007	14,76	21,83	22,69	24,19	30,73	27,88	30,80	29,35	23,94	28,68	22,73	21,57	149%	299,15	149%
2008	17,58	26,69	20,63	23,40	20,83	20,85	17,87	20,95	17,44	26,07	14,08	14,75	19%	241,15	19%
2009	7,01	9,61	15,03	16,93	14,45	10,28	16,57	14,55	19,19	13,67	17,46	21,45	-60%	176,20	-60%
2010	10,57	16,98	17,30	17,73	15,84	19,71	22,33	22,81	24,16	35,14	28,79	31,40	51%	262,75	51%
2011	22,21	-	-	-	-	-	-	-	-	-	-	-	110%	22,21	110%

3 – growth regarding the same month last year (*mtm*)

4 – from the beginning of the year up to the analyzed month inclusive (*ytm*)

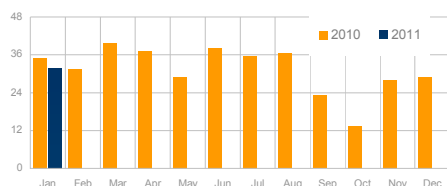
5 – growth regarding the same period last year (*ptp*)

6 – not taking into account deliveries to Belarus

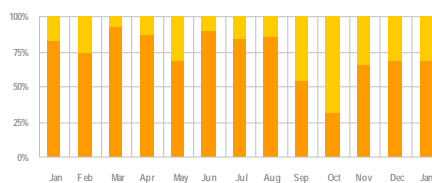
HDPE

Production and Utilization of Production Capacities by Companies

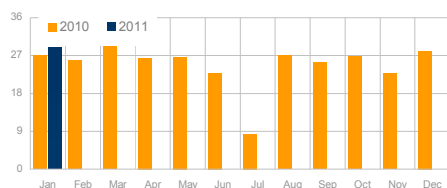
Kazanorgsyntez, KT



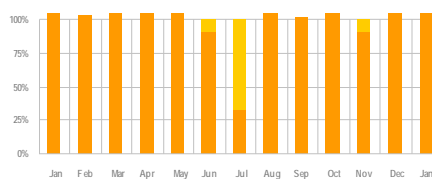
Kazanorgsyntez. Utilization of Capacities, %



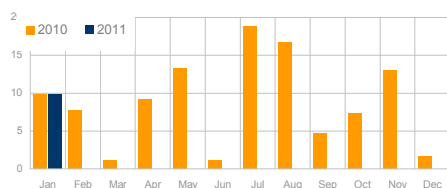
Stavrolen, KT



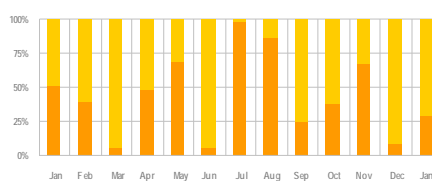
Stavrolen. Utilization of Capacities, %



Nizhnekamskneftekhim, KT



Nizhnekamskneftekhim. Utilization of Capacities, %



Kazanorgsyntez. Production of HDPE, KT

Year	Jan	Feb	Mar	Apr	May	Jun	Jul	Aug	Sep	Oct	Nov	Dec	mtm ³ ,%	ytm ⁴	ptp ⁵ ,%
2007	31,37	26,16	16,11	19,07	11,39	29,26	22,54	26,95	27,81	30,10	29,31	27,59	71%	297,65	71%
2008	30,33	27,15	22,04	18,75	24,00	27,07	25,61	23,28	27,98	25,99	17,81	31,47	-3%	301,48	-3%
2009	34,93	23,72	31,73	25,80	31,43	29,58	36,96	29,80	27,36	15,43	33,25	34,86	15%	354,86	15%
2010	35,08	31,51	39,66	37,23	28,87	38,02	35,70	36,40	23,09	13,44	28,10	29,03	0%	376,13	0%
2011	31,63	-	-	-	-	-	-	-	-	-	-	-	-10%	31,63	-10%

Stavrolen. Production of HDPE, KT

Year	Jan	Feb	Mar	Apr	May	Jun	Jul	Aug	Sep	Oct	Nov	Dec	mtm ³ ,%	ytm ⁴	ptp ⁵ ,%
2007	27,77	24,87	20,36	23,36	25,06	25,47	26,06	27,15	22,81	25,44	27,39	25,93	2%	301,66	2%
2008	26,85	22,52	26,81	25,79	26,42	23,97	26,52	21,53	26,21	27,39	28,07	26,13	-3%	308,23	-3%
2009	26,96	23,68	2,35	-	14,29	25,36	26,73	26,02	27,35	27,91	26,50	20,90	0%	248,05	0%
2010	27,12	25,84	29,20	26,39	26,61	22,85	8,39	26,98	25,42	26,89	22,65	28,11	1%	296,46	1%
2011	28,93	-	-	-	-	-	-	-	-	-	-	-	7%	28,93	7%

Nizhnekamskneftekhim. Production of HDPE, KT

Year	Jan	Feb	Mar	Apr	May	Jun	Jul	Aug	Sep	Oct	Nov	Dec	mtm ³ ,%	ytm ⁴	ptp ⁵ ,%
2010	9,80	7,68	1,13	9,24	13,24	1,14	18,80	16,72	4,69	7,37	13,02	1,63	-	104,46	-
2011	9,80	-	-	-	-	-	-	-	-	-	-	-	-	9,80	-

3 – growth regarding the same month last year (*mtm*)

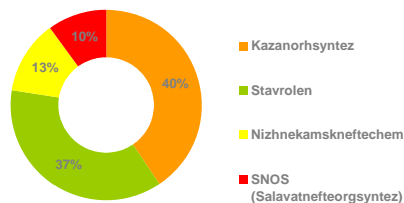
4 – from the beginning of the year up to the analyzed month inclusive (*ytm*)

5 – growth regarding the same period last year (*ptp*)

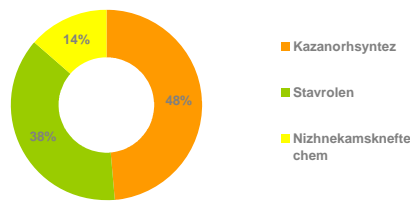
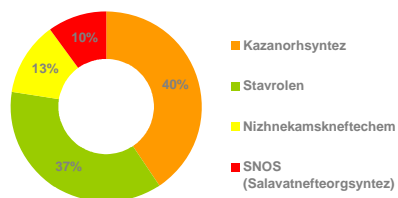
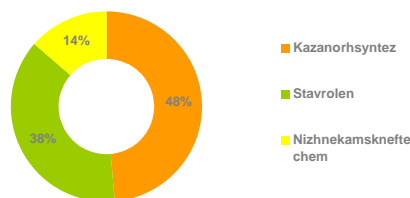
HDPE

Production by Companies, %

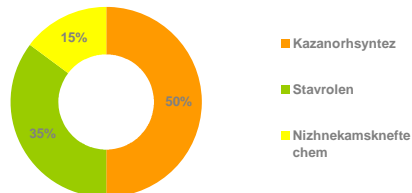
Production in the January 2011, %



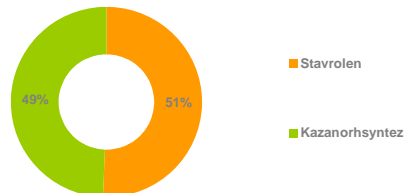
Production in the January 2010, %

Production from the start of 2011⁴, %Production from the start of 2010⁴, %

Production in 2009, %



Production in 2008, %



Production by Companies, KT

Producer	Jan 10	Feb 10	Mar 10	Apr 10	May 10	Jun 10	Jul 10	Aug 10	Sep 10	Oct 10	Nov 10	Dec 10	Jan 11	mtm ³ ,%	ytm ⁴	ptp ⁵ ,%
Kazanorhsyntez	35,08	31,51	39,66	37,23	28,87	38,02	35,70	36,40	23,09	13,44	28,10	29,03	31,63	-10%	31,63	-10%
Stavrolen	27,12	25,84	29,20	26,39	26,61	22,85	8,39	26,98	25,42	26,89	22,65	28,11	28,93	7%	28,93	7%
Nizhnekamskneftechem	9,80	7,68	1,13	9,24	13,24	1,14	18,80	16,72	4,69	7,37	13,02	1,63	9,80	0%	9,80	0%
SNOS	-	-	1,77	1,08	1,26	2,97	1,91	4,05	2,45	5,28	5,63	5,59	7,75	-	7,75	-
Total	72,00	65,03	71,75	73,94	69,99	64,98	64,80	84,15	55,65	52,98	69,40	64,37	78,10	8%	78,10	8%

3 – growth regarding the same month last year (*mtm*)

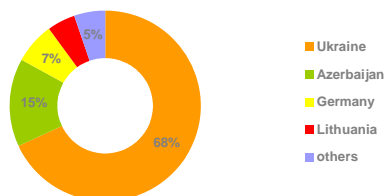
4 – from the beginning of the year up to the analyzed month inclusive (*ytm*)

5 – growth regarding the same period last year (*ptp*)

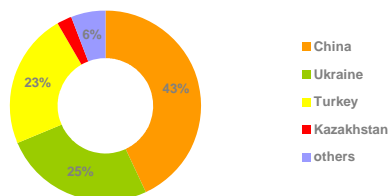
HDPE

Export⁶ by Countries, %

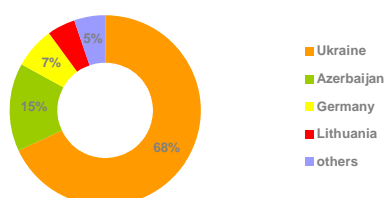
Export by countries in the January 2011, %



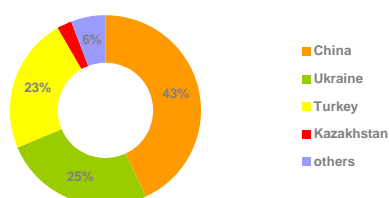
Export by countries in the January 2010, %



Export by countries from the start of 2011⁴, %

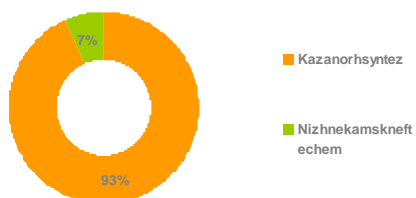


Export by countries from the start of 2010⁴, %

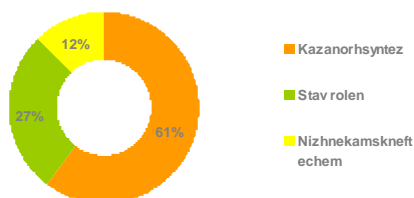


Export⁶ by Producers, %

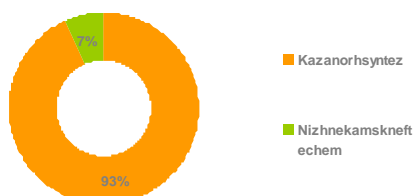
Export by Producers in the January 2011, %



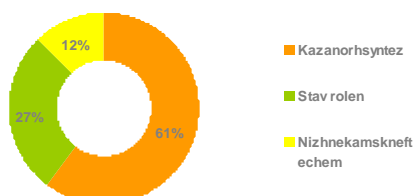
Export by Producers in the January 2010, %



Export by Producers from the start of 2011⁴, %



Export by Producers from the start of 2010⁴, %



4 – from the beginning of the year up to the analyzed month inclusive (ytm)

6 – not taking into account deliveries to Belarus

HDPE

Export⁶ by Countries, KT

Country	Jan 10	Feb 10	Mar 10	Apr 10	May 10	Jun 10	Jul 10	Aug 10	Sep 10	Oct 10	Nov 10	Dec 10	Jan 11	mtm ³ ,%	ytm ⁴	ptp ⁵ ,%
Ukraine	5,19	4,36	2,88	2,80	2,70	1,34	3,60	5,10	1,45	1,41	3,31	5,41	1,35	-74%	1,35	-74%
Turkey	4,70	3,79	7,15	6,12	1,89	3,50	0,30	-	-	1,50	-	0,37	-	-	-	-
Kazakhstan	0,56	1,82	1,35	2,24	3,49	7,40	2,63	0,14	-	-	-	-	-	-	-	-
China	8,81	2,65	2,67	3,03	-	-	0,00	-	-	-	-	-	-	-	-	-
Azerbaijan	0,38	0,93	1,45	1,84	0,59	0,30	1,43	0,89	0,20	0,15	0,40	0,95	0,30	-20%	0,30	-20%
Poland	0,10	0,55	0,62	0,20	0,22	0,02	0,10	0,02	0,04	0,02	0,18	0,12	0,06	-40%	0,06	-40%
Germany	-	-	0,27	0,39	0,35	0,10	0,32	0,19	0,14	-	-	0,11	0,14	-	0,14	-
Bulgaria	-	0,12	-	0,14	0,22	0,88	0,06	-	-	-	-	-	-	-	-	-
Belarus	-	-	-	-	-	-	-	-	-	-	-	1,27	-	-	-	-
others	0,69	0,46	0,39	0,26	0,25	0,41	0,22	0,13	0,07	0,19	0,21	0,05	0,14	-80%	0,14	-80%
Total	20,43	14,68	16,77	17,03	9,71	13,95	8,66	6,46	1,90	3,27	4,10	8,28	1,99	-90%	1,99	-90%

Export⁶ by Companies, KT

Producer	Jan 10	Feb 10	Mar 10	Apr 10	May 10	Jun 10	Jul 10	Aug 10	Sep 10	Oct 10	Nov 10	Dec 10	Jan 11	mtm ³ ,%	ytm ⁴	ptp ⁵ ,%
KazanorhsynteZ	12,34	9,74	13,31	15,38	7,74	11,46	7,86	4,83	1,90	1,64	3,85	6,28	1,85	-85%	1,85	-85%
Stavrolen	5,58	2,20	3,42	1,10	1,55	2,05	0,02	1,22	-	1,54	0,04	1,99	-	-	-	-
Nizhnekamskneft echem	2,52	2,69	0,04	0,54	0,42	0,44	0,77	0,41	-	0,09	0,21	-	0,14	-95%	0,14	-95%
others	-	0,04	-	-	-	-	0,02	0,01	-	-	-	0,01	-	-	-	-
Total	20,43	14,68	16,77	17,03	9,71	13,95	8,66	6,46	1,90	3,27	4,10	8,28	1,99	-90%	1,99	-90%

Export⁶. KazanorgsynteZ, KT

Year	Jan	Feb	Mar	Apr	May	Jun	Jul	Aug	Sep	Oct	Nov	Dec	mtm ³ ,%	ytm ⁴	ptp ⁵ ,%
2003	3,33	3,31	4,15	4,66	7,09	4,90	1,37	6,14	5,41	6,02	9,14	10,28	97%	65,79	97%
2004	5,52	9,46	2,82	2,42	1,16	1,13	0,05	0,84	2,56	2,59	2,11	1,61	66%	32,28	66%
2005	2,52	2,88	2,12	0,66	1,01	0,25	0,57	0,28	0,29	1,08	1,40	0,14	-54%	13,19	-54%
2006	1,63	2,82	2,66	1,34	0,73	0,61	0,36	0,52	0,72	1,06	2,47	10,12	-35%	25,05	-35%
2007	4,64	6,82	7,49	2,91	1,60	5,33	3,77	5,73	6,60	9,23	10,14	13,77	185%	78,03	185%
2008	9,97	7,96	4,86	1,29	3,64	4,35	6,25	4,29	3,04	2,39	3,00	11,71	115%	62,74	115%
2009	9,02	6,52	4,71	4,83	13,01	8,07	13,34	4,79	4,63	1,78	11,04	13,48	-10%	95,22	-10%
2010	12,34	9,74	13,31	15,38	7,74	11,46	7,86	4,83	1,90	1,64	3,85	6,28	37%	96,33	37%
2011	1,85	-	-	-	-	-	-	-	-	-	-	-	-85%	1,85	-85%

Export⁶. Stavrolen, KT

Year	Jan	Feb	Mar	Apr	May	Jun	Jul	Aug	Sep	Oct	Nov	Dec	mtm ³ ,%	ytm ⁴	ptp ⁵ ,%
2003	13,76	5,66	11,17	11,84	4,85	0,42	1,72	3,99	5,57	8,28	14,42	16,76	-24%	98,43	-24%
2004	17,39	2,18	0,85	2,60	1,48	0,00	0,04	5,59	2,11	7,16	6,60	3,65	26%	49,67	26%
2005	5,76	2,29	1,93	1,48	1,54	0,90	0,64	1,21	1,81	1,96	2,34	0,85	-67%	22,70	-67%
2006	4,06	2,54	2,07	1,65	1,59	0,02	0,56	0,89	0,77	0,64	0,02	2,21	-29%	17,01	-29%
2007	2,99	2,54	0,49	0,22	0,48	0,21	0,32	0,53	0,65	0,53	1,74	1,21	-26%	11,91	-26%
2008	2,58	0,57	0,91	0,85	0,87	0,99	1,25	0,35	0,52	0,95	0,32	7,67	-14%	17,82	-14%
2009	3,63	1,06	0,11	-	0,69	1,74	2,08	1,53	3,05	1,01	4,37	6,81	41%	26,06	41%
2010	5,58	2,20	3,42	1,10	1,55	2,05	0,02	1,22	-	1,54	0,04	1,99	54%	20,70	54%
2011	-	-	-	-	-	-	-	-	-	-	-	-	-	-	-

3 – growth regarding the same month last year (mtm)

4 – from the beginning of the year up to the analyzed month inclusive (ytm)

5 – growth regarding the same period last year (ptp)

6 – not taking into account deliveries to Belarus

HDPE

Export⁶. Nizhnekamskneftekhim, KT

Year	Jan	Feb	Mar	Apr	May	Jun	Jul	Aug	Sep	Oct	Nov	Dec	mtm ³ ,%	ytm ⁴	ptp ⁵ ,%
2010	2,52	2,69	0,04	0,54	0,42	0,44	0,77	0,41	-	0,09	0,21	-	--	-	-
2011	0,14	-	-	-	-	-	-	-	-	-	-	-	-95%	0,14	-95%

Export⁶ by Countries. Kazanorgsyntez, KT

Country	Jan 10	Feb 10	Mar 10	Apr 10	May 10	Jun 10	Jul 10	Aug 10	Sep 10	Oct 10	Nov 10	Dec 10	Jan 11	mtm ³ ,%	ytm ⁴	ptp ⁵ ,%
Ukraine	3,69	2,94	2,14	2,22	2,00	0,79	3,51	3,84	1,45	1,37	3,27	5,05	1,35	-63%	1,35	-63%
Turkey	2,90	1,19	4,90	5,60	1,00	2,00	0,30	-	-	-	-	-	-	-	-	-
Kazakhstan	0,20	1,50	1,29	1,88	3,15	7,40	2,09	-	-	-	-	-	-	-	-	-
China	5,03	2,65	2,30	3,03	-	-	0,00	-	-	-	-	-	-	-	-	-
Azerbaijan	-	0,75	1,45	1,75	0,55	0,30	1,25	0,75	0,20	0,15	0,40	0,95	0,30	-	0,30	-
Poland	0,10	0,34	0,62	0,20	0,22	0,02	0,10	0,02	0,04	0,02	0,18	0,12	0,06	-40%	0,06	-40%
Germany	-	-	0,27	0,39	0,35	0,10	0,32	0,18	0,14	0,00	-	0,11	0,14	-	0,14	-
others	0,42	0,37	0,34	0,31	0,47	0,85	0,28	0,04	0,07	0,10	-	0,05	0,00	-99%	0,00	-99%
Total	12,34	9,74	13,31	15,38	7,74	11,46	7,86	4,83	1,90	1,64	3,85	6,28	1,85	-85%	1,85	-85%

Export⁶ by Countries. Stavrolen, KT

Country	Jan 10	Feb 10	Mar 10	Apr 10	May 10	Jun 10	Jul 10	Aug 10	Sep 10	Oct 10	Nov 10	Dec 10	Jan 11	mtm ³ ,%	ytm ⁴	ptp ⁵ ,%
Turkey	0,37	1,41	2,25	0,52	0,89	1,50	-	-	-	1,50	-	0,37	-	-	-	-
Ukraine	1,33	0,48	0,74	0,58	0,66	0,55	0,02	1,22	-	0,04	0,04	0,35	-	-	-	-
China	3,78	-	0,37	-	-	-	-	-	-	-	-	-	-	-	-	-
Belarus	-	-	-	-	-	-	-	-	-	-	-	1,27	-	-	-	-
Poland	-	0,21	-	-	-	-	-	-	-	-	-	-	-	-	-	-
Azerbaijan	0,11	-	-	-	-	-	-	-	-	-	-	-	-	-	-	-
others	-	0,10	0,06	-	-	-	-	-	-	-	-	-	-	-	-	-
Total	5,58	2,20	3,42	1,10	1,55	2,05	0,02	1,22	-	1,54	0,04	1,99	-	-	-	-

Export⁶ by Countries. Nizhnekamskneftekhim, KT

Country	Jan 10	Feb 10	Mar 10	Apr 10	May 10	Jun 10	Jul 10	Aug 10	Sep 10	Oct 10	Nov 10	Dec 10	Jan 11	mtm ³ ,%	ytm ⁴	ptp ⁵ ,%
Turkey	1,44	1,19	-	-	-	-	-	-	-	-	-	-	-	-	-	-
Kazakhstan	0,36	0,32	-	0,36	0,33	-	0,54	0,14	-	-	-	-	-	-	-	-
Ukraine	0,18	0,95	-	-	0,04	-	0,04	0,04	-	-	-	-	-	-	-	-
Azerbaijan	0,27	0,18	-	0,09	0,04	-	0,18	0,14	-	-	-	-	-	-	-	-
Bulgaria	-	0,02	-	-	-	0,44	-	-	-	-	-	-	-	-	-	-
Finland	0,04	-	-	0,04	-	-	-	-	-	0,09	0,16	-	0,04	-	0,04	-
others	0,23	0,04	0,04	0,04	-	-	-	0,09	-	-	0,04	-	0,09	-60%	0,09	-60%
Total	2,52	2,69	0,04	0,54	0,42	0,44	0,76	0,41	-	0,09	0,21	-	0,14	-95%	0,14	-95%

3 – growth regarding the same month last year (mtm)

4 – from the beginning of the year up to the analyzed month inclusive (ytm)

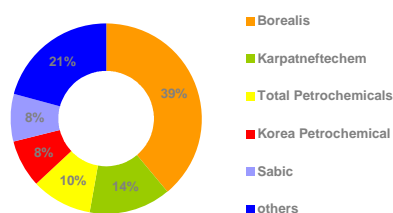
5 – growth regarding the same period last year (ptp)

6 – not taking into account deliveries to Belarus

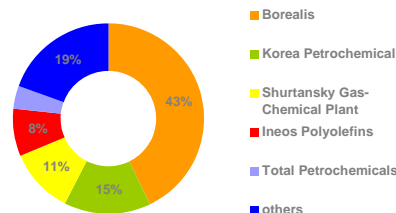
HDPE

Import by Producers, %

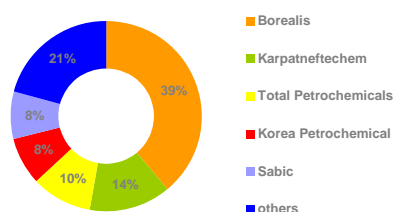
Import by Producers in the January 2011, %



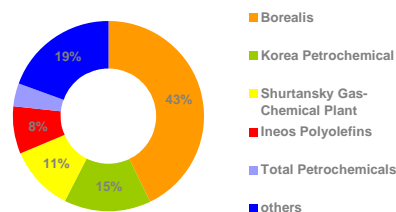
Import by Producers in the January 2010, %



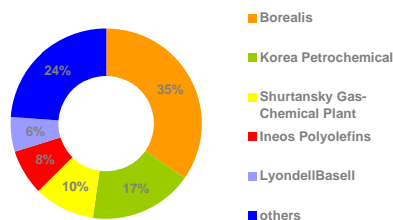
Import by Producers from the start of 2011⁴, %



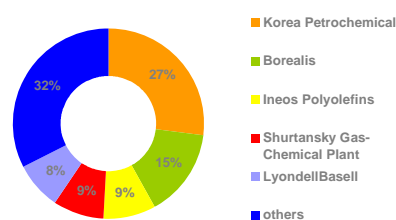
Import by Producers from the start of 2010⁴, %



Import in Producers 2009, %



Import in Producers 2008, %



Import by Producers, KT

Producer	Jan 10	Feb 10	Mar 10	Apr 10	May 10	Jun 10	Jul 10	Aug 10	Sep 10	Oct 10	Nov 10	Dec 10	Jan 11	mtm ³ ,%	ymt ⁴	ptp ⁵ ,%
Borealis	4,52	7,55	8,34	9,39	6,10	5,89	7,62	5,60	7,34	9,23	8,75	11,73	8,66	92%	8,66	92%
Korea Petrochemical	1,55	1,93	2,11	0,01	1,97	2,48	2,16	2,52	2,56	5,73	4,26	2,98	1,80	16%	1,80	16%
Shurtansky Gas-Chemical Plant	1,18	1,77	1,41	2,50	1,91	1,30	2,47	2,80	3,34	2,45	0,16	1,16	0,38	-68%	0,38	-68%
LyondellBasell	0,28	0,74	0,44	0,98	0,72	1,33	1,09	2,70	3,36	2,46	2,99	1,91	0,64	126%	0,64	126%
Sabc	0,04	0,45	0,36	0,21	0,25	2,47	2,72	2,64	0,96	2,42	1,08	1,48	1,79	-	1,79	-
Total Petrochemicals	0,42	0,89	0,56	0,82	1,44	1,16	0,81	1,69	0,39	2,07	2,38	1,73	2,28	439%	2,28	439%
Ineos Polyolefins	0,86	1,02	1,01	1,18	0,69	1,32	0,66	0,68	1,78	2,48	1,12	1,35	0,58	-33%	0,58	-33%
Karpatneftechem	-	-	-	-	-	-	-	-	0,21	2,33	3,24	4,13	3,05	-	3,05	-
SCG Chemicals	0,07	-	0,07	0,14	-	0,25	0,98	0,47	1,02	1,60	0,89	-	1,43	-	1,43	-
Daelim	0,05	0,61	0,42	0,73	0,37	0,60	0,92	0,27	0,46	0,93	0,68	0,40	0,22	336%	0,22	336%
others	1,60	2,02	2,56	1,79	2,39	2,91	2,89	3,44	2,75	3,44	3,24	4,52	1,40	-12%	1,40	-
Total	10,57	16,98	17,30	17,73	15,84	19,71	22,33	22,81	24,16	35,14	28,79	31,40	22,21	110%	22,21	110%

3 – growth regarding the same month last year (*mtm*)

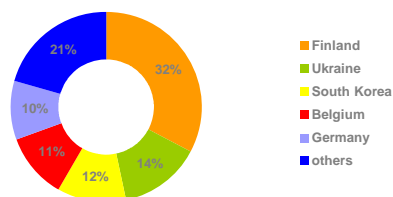
4 – from the beginning of the year up to the analyzed month inclusive (*ymt*)

5 – growth regarding the same period last year (*ptp*)

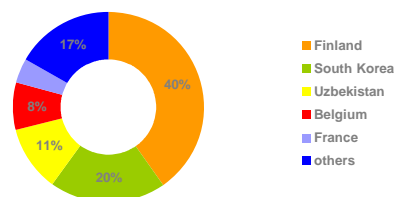
HDPE

Import by Countries, %

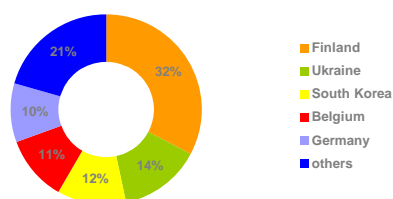
Import by countries in the January 2011, %



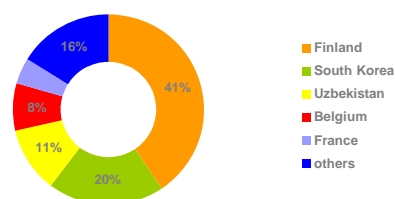
Import by countries in the January 2010, %



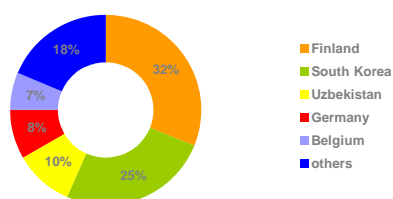
Import by countries from the start of 2011⁴, %



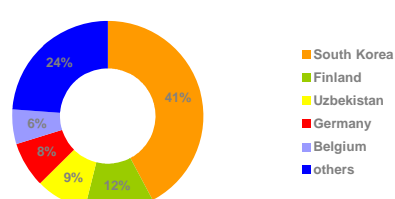
Import by countries from the start of 2010⁴, %



Import in 2009, %



Import in 2008, %



Import by Countries, KT

Country	Jan 10	Feb 10	Mar 10	Apr 10	May 10	Jun 10	Jul 10	Aug 10	Sep 10	Oct 10	Nov 10	Dec 10	Jan 11	mtm ³ ,%	ytm ⁴	ptp ⁵ ,%
Finland	4,27	6,67	6,85	5,73	4,79	4,56	5,23	3,85	5,68	6,31	6,07	7,10	7,30	71%	7,30	71%
South Korea	2,10	3,42	3,82	1,56	3,21	3,89	4,41	3,76	4,06	8,53	6,03	5,19	2,63	25%	2,63	25%
Germany	0,33	1,19	0,65	0,79	0,78	3,19	3,69	4,24	3,39	3,29	2,90	2,52	2,19	570%	2,19	570%
Uzbekistan	1,18	1,77	1,41	2,50	1,91	1,30	2,47	2,80	3,34	2,45	0,16	1,16	0,38	-68%	0,38	-68%
Belgium	0,85	1,08	0,80	0,86	1,64	1,34	0,98	2,02	1,13	3,65	2,85	2,54	2,46	190%	2,46	190%
Sweden	0,12	0,32	1,40	3,52	1,07	1,24	1,98	1,43	1,25	2,19	2,08	4,09	1,19	-	1,19	-
Ukraine	-	-	-	-	-	-	-	-	0,21	2,33	3,24	4,13	3,05	-	3,05	-
France	0,45	0,66	0,87	1,12	0,74	0,94	0,46	0,49	0,85	0,99	0,65	0,30	0,38	-17%	0,38	-17%
Thailand	0,32	0,04	0,14	0,14	0,07	0,29	1,02	0,95	1,02	1,79	1,12	0,22	1,43	345%	1,43	345%
others	0,94	1,84	1,35	1,51	1,64	2,96	2,08	3,28	3,23	3,60	3,71	4,16	1,22	29%	1,22	29%
Total	10,57	16,98	17,30	17,73	15,84	19,71	22,33	22,81	24,16	35,14	28,79	31,40	22,21	110%	22,21	110%

3 – growth regarding the same month last year (*mtm*)

4 – from the beginning of the year up to the analyzed month inclusive (*ytm*)

5 – growth regarding the same period last year (*ptp*)

LLDPE

Consumption, KT

Indexes	Jan 10	Feb 10	Mar 10	Apr 10	May 10	Jun 10	Jul 10	Aug 10	Sep 10	Oct 10	Nov 10	Dec 10	Jan 11	mtm ³ ,%	ytm ⁴	ptp ⁵ ,%
Import	4,74	5,91	8,53	9,99	9,60	9,27	9,10	11,51	10,43	10,68	10,98	17,28	7,30	54%	7,30	54%
production	0,26	3,36	12,39	1,34	-	12,27	-	-	10,50	0,88	-	13,87	6,74	-	6,74	-
Export	0,30	-	0,18	0,09	-	0,10	0,05	0,00	0,03	-	0,01	0,18	-	-	-	-
Demand	4,70	9,27	20,73	11,24	9,60	21,44	9,05	11,51	20,91	11,56	10,98	30,97	14,04	198%	14,04	198%

Production by Companies, KT

Producer	Jan 10	Feb 10	Mar 10	Apr 10	May 10	Jun 10	Jul 10	Aug 10	Sep 10	Oct 10	Nov 10	Dec 10	Jan 11	mtm ³ ,%	ytm ⁴	ptp ⁵ ,%
Nizhnekamskneft echem	0,26	3,36	12,39	1,34	-	12,27	-	-	10,50	0,88	-	13,87	6,74	-	6,74	-
Total	0,26	3,36	12,39	1,34	-	12,27	-	-	10,50	0,88	-	13,87	6,74	-	6,74	-

Export by Companies, KT

Producer	Jan 10	Feb 10	Mar 10	Apr 10	May 10	Jun 10	Jul 10	Aug 10	Sep 10	Oct 10	Nov 10	Dec 10	Jan 11	mtm ³ ,%	ytm ⁴	ptp ⁵ ,%
Nizhnekamskneft echem	0,30	-	0,18	0,09	-	0,10	0,05	0,00	0,03	-	0,01	0,18	-	-	-	-
Total	0,30	-	0,18	0,09	-	0,10	0,05	0,00	0,03	-	0,01	0,18	-	-	-	-

Import, KT

Year	Jan	Feb	Mar	Apr	May	Jun	Jul	Aug	Sep	Oct	Nov	Dec	mtm ³ ,%	ytm ⁴	ptp ⁵ ,%
2003	0,45	1,18	0,65	1,06	1,05	1,30	2,12	1,57	0,84	0,93	1,16	1,26	24%	13,58	24%
2004	1,11	1,24	1,38	1,91	1,82	3,01	2,54	2,39	1,43	1,70	2,19	2,03	149%	22,74	149%
2005	1,17	1,60	2,36	3,77	2,84	3,81	3,01	2,51	2,94	3,31	3,02	4,01	5%	34,36	5%
2006	2,31	3,72	4,61	3,65	4,78	5,31	3,58	5,39	5,83	6,50	6,98	7,39	97%	60,04	97%
2007	4,27	5,37	6,66	6,57	6,88	4,85	6,17	8,33	7,75	8,98	6,79	9,06	85%	81,68	85%
2008	4,88	6,81	7,05	8,34	8,22	6,72	6,79	8,44	5,16	8,48	4,99	6,20	14%	82,07	14%
2009	3,10	4,29	6,93	8,63	8,32	9,77	11,50	8,48	9,12	6,88	7,53	9,90	-37%	94,46	-37%
2010	4,74	5,91	8,53	9,99	9,60	9,27	9,10	11,51	10,43	10,68	10,98	12,80	53%	113,53	53%
2011	7,14	-	-	-	-	-	-	-	-	-	-	-	51%	7,14	51%

3 – growth regarding the same month last year (mtm)

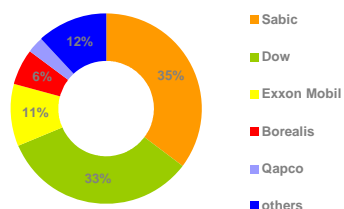
4 – from the beginning of the year up to the analyzed month inclusive (ytm)

5 – growth regarding the same period last year (ptp)

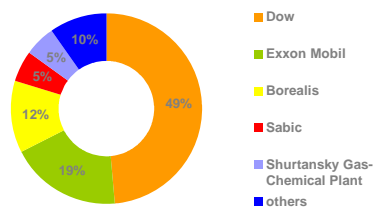
LLDPE

Import by Producers, %

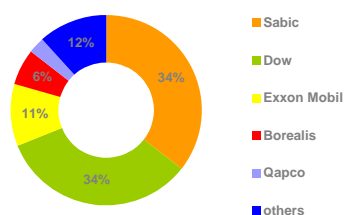
Import by Producers in the January 2011, %



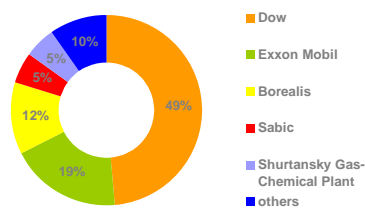
Import by Producers in the January 2010, %



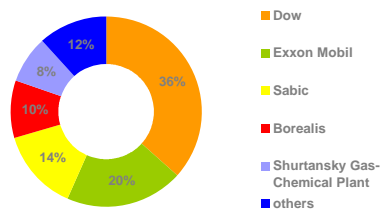
Import by Producers from the start of 2011⁴, %



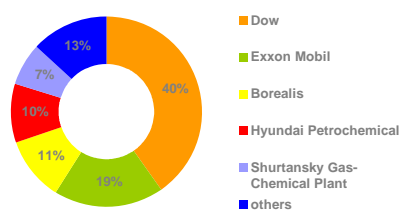
Import by Producers from the start of 2010⁴, %



Import in Producers 2009, %



Import in Producers 2008, %



Import by Producers, KT

Producer	Jan 10	Feb 10	Mar 10	Apr 10	May 10	Jun 10	Jul 10	Aug 10	Sep 10	Oct 10	Nov 10	Dec 10	Jan 11	mtm ³ ,%	ytm ⁴	ptp ⁵ ,%
Dow	2,30	2,70	3,51	3,56	2,53	2,97	2,64	3,70	3,68	3,02	3,44	1,89	2,40	4%	2,40	4%
Sabic	0,26	0,68	1,53	1,56	2,71	1,36	0,90	2,95	1,75	2,57	3,60	6,39	2,53	-	2,53	-
Exxon Mobil	0,90	0,85	1,28	2,10	1,56	1,51	1,66	1,22	1,57	1,37	1,37	2,51	0,76	-16%	0,76	-16%
Shurtansky Gas-Chemical Plant	0,25	0,20	0,64	1,04	0,69	0,90	1,25	1,53	1,00	1,33	0,05	0,75	-	-	-	-
Borealis	0,57	0,74	0,76	0,48	0,57	0,94	1,06	0,63	0,60	0,56	0,55	0,54	0,43	-25%	0,43	-25%
Honam Petrochemical	0,02	0,04	0,27	0,40	0,63	0,89	0,82	0,33	0,57	0,24	0,10	0,10	0,06	262%	0,06	262%
Daelim	0,05	0,20	0,12	0,24	0,42	0,32	0,22	0,36	0,27	0,31	0,61	0,43	0,19	267%	0,19	267%
LG Chem	0,14	0,17	0,09	0,23	0,14	0,09	0,25	0,23	0,31	-	0,35	0,04	0,05	-62%	0,05	-62%
Hanwha Corporation	0,03	0,05	0,07	0,07	0,05	0,04	0,07	0,10	0,26	0,18	0,27	-	0,18	582%	0,18	582%
others	0,22	0,26	0,26	0,31	0,28	0,25	0,24	0,47	0,41	1,11	0,64	0,15	0,55	146%	0,55	146%
Total	4,74	5,91	8,53	9,99	9,60	9,27	9,10	11,51	10,43	10,68	10,98	12,80	7,14	51%	7,14	51%

3 – growth regarding the same month last year (*mtm*)

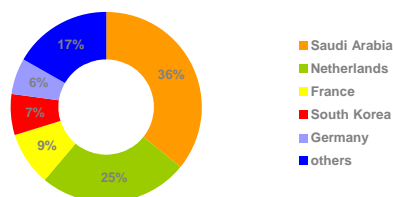
4 – from the beginning of the year up to the analyzed month inclusive (*ytm*)

5 – growth regarding the same period last year (*ptp*)

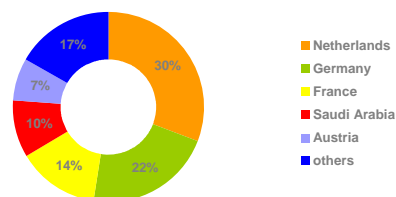
LLDPE

Import by Countries, %

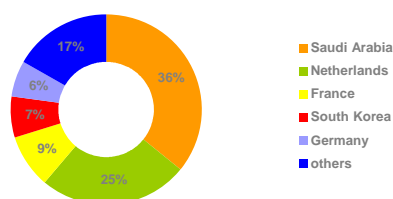
Import by countries in the January 2011, %



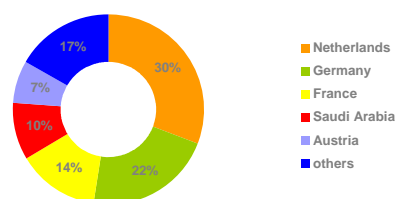
Import by countries in the January 2010, %



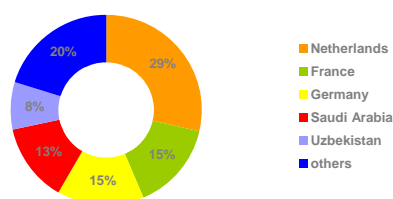
Import by countries from the start of 2011⁴, %



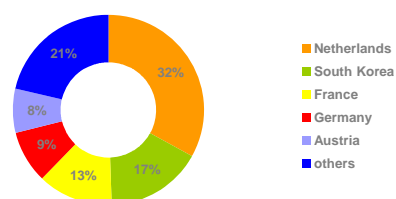
Import by countries from the start of 2010⁴, %



Import in 2009, %



Import in 2008, %



Import by Countries, KT

Country	Jan 10	Feb 10	Mar 10	Apr 10	May 10	Jun 10	Jul 10	Aug 10	Sep 10	Oct 10	Nov 10	Dec 10	Jan 11	mtm ³ ,%	ytm ⁴	ptp ⁵ ,%
Saudi Arabia	0,46	0,50	1,57	1,55	2,75	1,69	0,92	2,99	1,80	2,14	3,40	6,37	2,57	460%	2,57	460%
Netherlands	1,47	1,95	2,54	2,29	1,69	1,84	2,00	2,86	2,93	2,73	2,98	1,54	1,80	23%	1,80	23%
France	0,66	0,79	0,96	1,67	1,30	1,05	1,53	0,88	1,38	1,22	1,10	2,00	0,64	-3%	0,64	-3%
Germany	1,02	1,13	1,25	1,54	1,22	0,97	0,69	1,16	0,91	0,97	1,06	0,71	0,44	-57%	0,44	-57%
South Korea	0,23	0,47	0,66	1,08	1,29	1,44	1,48	1,08	1,47	1,12	1,33	0,56	0,50	114%	0,50	114%
Uzbekistan	0,25	0,20	0,64	1,04	0,69	0,90	1,25	1,53	1,00	1,33	0,05	0,75	-	-	-	-
Austria	0,35	0,47	0,46	0,30	0,43	0,91	0,80	0,42	0,46	0,33	0,19	0,27	0,04	-89%	0,04	-89%
Finland	0,23	0,20	0,26	0,19	0,14	0,03	0,21	0,13	0,14	0,23	0,36	0,35	0,42	86%	0,42	86%
Belgium	0,04	0,08	0,09	0,23	0,03	0,03	0,03	0,13	0,16	0,19	0,17	0,20	0,12	209%	0,12	209%
Qatar	-	-	-	-	-	-	-	-	-	0,15	0,20	-	0,20	-	0,20	-
others	0,04	0,12	0,09	0,10	0,07	0,40	0,20	0,33	0,19	0,27	0,14	0,05	0,42	-	0,20	-
Total	4,74	5,91	8,53	9,99	9,60	9,27	9,10	11,51	10,43	10,68	10,98	12,80	7,14	51%	7,14	51%

3 – growth regarding the same month last year (*mtm*)

4 – from the beginning of the year up to the analyzed month inclusive (*ytm*)

5 – growth regarding the same period last year (*ptp*)

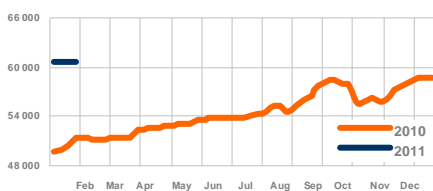
Price

Prices of PE in the Domestic Market (for MT)

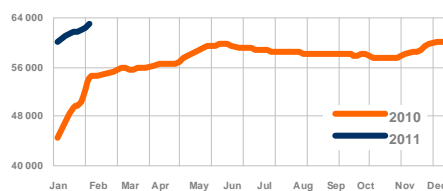
Type	Jan 10	Feb 10	Mar 10	Apr 10	May 10	Jun 10	Jul 10	Aug 10	Sep 10	Oct 10	Nov 10	Dec 10	Jan 11
HDPE	49 892	51 483	51 851	52 613	53 568	54 242	54 526	55 749	58 441	57 959	57 414	58 836	60 538
Increase, RUB	-	1 591	368	762	955	674	284	1 223	2 691	-482	-545	1 423	1 702
LDPE	48 455	55 067	56 050	56 928	59 702	59 669	59 226	58 965	58 795	58 446	59 131	60 448	61 940
Increase, RUB	-	6 612	983	878	2 774	-33	-443	-262	-170	-349	685	1 317	1 492
LLDPE	54 188	59 614	61 881	61 780	62 517	63 019	63 140	62 126	61 946	63 702	65 551	65 976	67 239
Increase, RUB	-	5 427	2 267	-102	737	502	121	-1 014	-181	1 756	1 849	425	1 263

Price in the Domestic Market

HDPE price*, domestic market, CPT Moscow, USD/mt

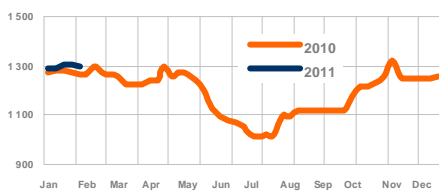


LDPE price*, domestic market, CPT Moscow, USD/mt



HDPE: Asia and Europe

Price HDPE, CFR SE Asia, spot, USD/mt

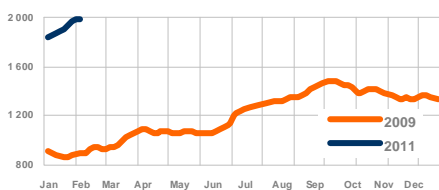


Price HDPE, FD NWE, spot, USD/mt

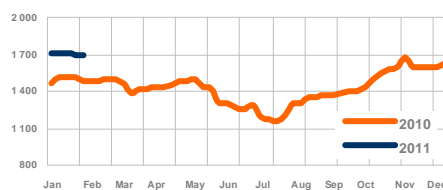


LDPE: Europe and Asia

Price LDPE, FD NWE, spot, USD/mt

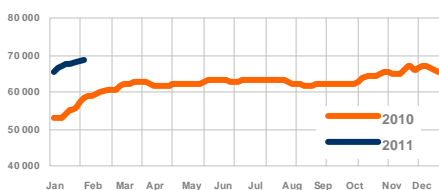


Price LDPE, CFR SE Asia, spot, USD/mt

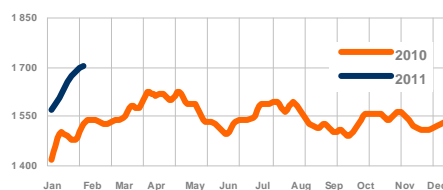


LLDPE

LLDPE price, domestic market, CPT Moscow, USD/mt



Price LLDPE, FD NWE, spot, USD/mt



* prices in the domestic market of the Russian Federation calculated taking into account "weight" of each brand depending on its consumption volumes. For Russian brands - CPT, Moscow; for foreign brands - DDU, Moscow.

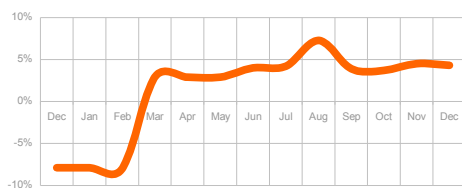
Key Economic and Social Figures in the Russian Federation

Output Volumes of Some Processing Sectors in the Russian Federation (selectively)

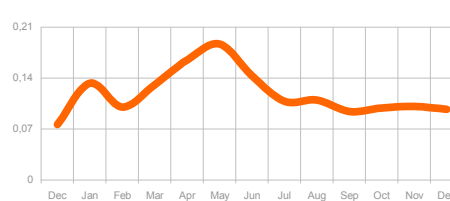
Indexes	Jan 10	Feb 10	Mar 10	Apr 10	May 10	Jun 10	Jul 10	Aug 10	Sep 10	Oct 10	Nov 10	Dec 10	Jan 11	mtm ³ ,%	ytm ⁴	ptp ⁵ ,%
Milk, KT	388	382	420	411	406	398	340	422	424	411	392	403	402	3,2%	402	1,5%
Steel pipes, KT	604	683	785	738	694	748	742	756	833	867	853	923	819	30,5%	819	-11,1%
Bread and bakery, KT	519	499	559	544	576	561	554	562	573	575	551	581	523	-0,8%	523	-9,5%
Mineral water, mln. half-liters	469	531	720	738	872	969	1141	1137	694	531	639	710	523	9,1%	523	-33,6%
Sausage, KT	111	110	125	125	133	137	143	141	137	135	132	141	113	5,6%	113	-19,1%
Tiles, thous. m ²	44,3	10,4	8,9	0,8	-	-	-	-	-	-	-	-	-	-	-	-

Key Economic and Social Figures in the Russian Federation

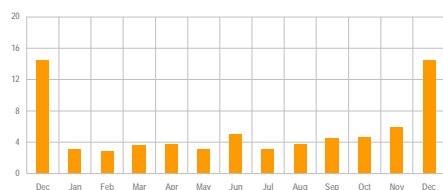
GDP Growth Dynamics, %



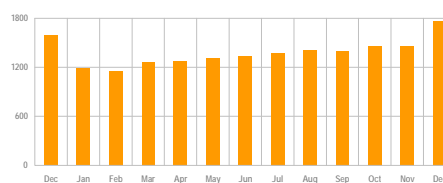
Processing Industry Index, %



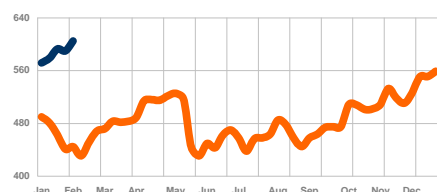
Commissioning of Housing, mln. sq.m.



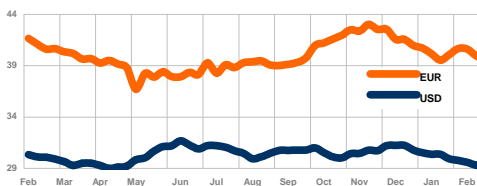
Retail Trade Turnover, RUB billion



Price of oil, Brent, USD/mt, FOB NWE



Official Currency Exchange Rate of the Central Bank of the Russian Federation, 2010/2011



3 – growth regarding the same month last year (*mtm*)

4 – from the beginning of the year up to the analyzed month inclusive (*ytm*)

5 – growth regarding the same period last year (*ptp*)

News

07 February, 2011

Low demand in the Russian market still limits LDPE price hikes

MOSCOW (MRC) -- Beginning of the year was marked with considerable growth of prices for LDPE, but even a month later the Russian market still can't entirely accept this swing in prices, according to MRC analysts.

In the first January week the Russian producers raised the prices for LDPE by 2.000 – 2.400 RUB/t. The warehouse stocks of the trading companies made yet in December-first half of January allowed to limit the price hike in the spot market. Traditionally, in the beginning of the year demand for polyethylene is very low in the market that also had an impact on prices.

A month later the situation in the Russian market of LDPE actually didn't change. The purchasing activity is still not high. Demand for many types of films is still low and the current level of prices for polyethylene doesn't allow many converters to increase the volumes of purchases for future. Also a part of converters formed additional material stocks yet in December and with new purchases they plan to enter the market not earlier than in the second half of February.

By the beginning of February the range of prices for LDPE from the Russian producers in the spot market had considerably decreased. The price offer for 158 PE by the beginning of the current week is fixed within the range 62.000 – 63.500 RUB/t, including VAT, FCA. LDPE for production of shrinkable film is offered on average for 62.800 – 64.000 RUB/t, including VAT, FCA.

14 February, 2011

Linear polyethylene imports to Russia in January down to 7 KT

MOSCOW (MRC) -- Overall imports of linear polyethylene to Russia in January almost halved in comparison to December and made 7.2 KT. Imports at the end of February is forecasted at the same level, according to MRC analysts. Reduction of overall LLDPE imports to the Russian market last month was expected and stipulated by several factors.

First, in December Nizhnekamskneftehim restarted production of LLDPE thus providing sufficient raw material stocks for the Russian converters for production of cast stretch film in December-February.

The second and equally important fact is that in January demand for finished films considerably fell and the converters traditionally reduced PE purchases.

Thirdly, prices for LLDPE from the European producers grew on average by EUR 110/mt in January, which to some extent also had an impact on overall purchases.

In February import supplies of LLDPE to Russia are unlikely to increase. First of all, it relates the availability of materials from Nizhnekamsk in the market as well as limited PE offer from some European suppliers. The supplies of LLDPE from Shurtansk GKH remain limited.

Last week the prices for butene linear polyethylene were fixed within the range of 62.000 – 63.500 RUB./t, including VAT, FCA.

16 February, 2011

Pipe HDPE imports to Russia in January down by 25%

MOSCOW (MRC) -- Import supplies of pipe HDPE to the Russian market in January reduced by 25% compared to December and made 4.6 KT, according to MRC analysts.

Starting from October, the period of peak material supplies, the Russian companies have been systematically reducing the import supplies of pipe HDPE.

In January overall imports of the pipe material fell to the level of 4.6 KT. Actually 7 companies now continue purchasing of pipe material in the external markets.

Now the Russian market doesn't face the problems with the availability of pipe materials. The Russian pipe colored PE100 is being supplied to the market notwithstanding some problems. Also the non-colored analogues are available in sufficient volumes.

The correction of prices for the Russian pipe PE is gradually continuing. By mid-February the price offer for the Russian colored PE80 and PE100 in the spot market has been fixed within the range of 62.500 – 64.500 RUB./t, including VAT, FCA.

The price for imported PE100 is significantly higher and it starts, on average, from 70.000 RUB./t, including VAT, CPT. Some Asian suppliers of pipe HDPE have declared the growth of prices for March polymer shipment on average by USD 60/mt. The prices are expected to grow for the European PE by EUR 40-50/mt in March.

22 February, 2011

The Russian market of HDPE to face insignificant changes in March

MOSCOW (MRC) -- The growth of prices for PE in the external markets is going on, while low demand and excessive offer will limit the price growth in Russia, according to MRC Price Reports.

The continuing growth of oil prices along with ethylene prices in the European and Asian markets will result in further growth of polyethylene prices in March. Some European producers have already declared their intentions to jack up the prices for HDPE by EUR 40-50/mt next month. The same actions are considered also by the Asian producers. According to preliminary data, the March price rise for HDPE will make USD 40-60/mt.

After launching of new capacities in Nizhnekamsk and Salavat, the Russian market of HDPE is not so adoptive to the price rise in the external markets. Even now, by the end of February, the Russian converters could not fully accept January PE price rise. Low seasonal demand almost in all consumption sectors in terms of stable work of all producers resulted in the market saturation and enforced competition between HDPE producers.

The range of prices for HDPE is considerably high in the market. For example, for film HDPE it makes 58.500 – 63.000 RUB./t, including VAT, FCA, depending on producers and regions. The forecasted growth of PE prices in Asia and Europe will have some effect on prices in Russia. In the beginning of March the price rise is not expected in the Russian market, and the price range for HDPE from the Russian producers will decrease to 1.500 – 2.000 RUB./t.

About Us

Market Report Company was founded in 2003. Our goal is to provide the most professional information on the petrochemical markets of Russia, the CIS and East-European countries.

Today, MRC publishes regular reports on the markets of polyethylene, polypropylene, PVC and polystyrene. Furthermore, our analysts have information on the markets of additives, masterbatches, films, pipes, window profiles and automobile components.

Our clients

We are trusted by TOP-50 world petrochemical companies, which overall sales volumes exceed the Russian GDP more than two times.

Our clients are Anwil, Akzo Nobel, Arkema, LyondellBasell, BASF, B&B, Chemopetrol, Ciba, Clariant, Commerzbank, Dow, DuPont, ExxonMobil, LG Chem, Mitsubishi, Mitsui, Miliken, Nexant, Itochu, HKHX, Nubiola, Polimeri Europa, R&H, Samsung, Solvay, Shin-Etsu, Total Petrochemical, TVK, Huhtamaki, Lukoil-Neftekhim, Sibur, Sayanskhimplast, Plastcard, Bashkhir, Kazanorgsyntez, Tatneft and others

Reports

MRC publishes about 1500 reports a year. Our portfolio includes

- Annual reports
- Weekly Price Reports
- Monthly Reports
- DataScope
- ScanPlast
- PlastGuide
- Price Forecast
- Top-50
- Special Projects

Contacts

Moscow Tel: +7 495 543 91 94
London Tel: +44 20 814 422 25
Kyiv Tel: +38 044 599 29 50

info@mrcplast.com
www.mrcplast.com
www.mrcplast.ru

Post

180, Tottenham Court Road, Suite 12 W1T 7PD,
London, UK
4A, Sokolnicheskaya Sq., Moscow, 107113, Russia
26th floor, 45B, Lenin Ave. Kharkiv, 61072, Ukraine.

Subscribe

Publication schedule:
http://www.mrcplast.com/pages.php?id_page=27&lang_m=en

Prices and discounts:
http://mrcplast.com/docs/MRC_prices_Rus_2009.pdf

Payment terms:
http://mrcplast.com/docs/MRC_payments_Rus.pdf

Methodology

General Information

The Report has been made up on the basis of statistical information provided by the statistical institutions of the Russian Federation and may contain certain inaccuracies connected with the incorrect distribution of data by types of polymers based on the Foreign Trade Codes in the customs statistics of the Federal Customs Service or on codes of the Federal Service of State Statistics in the production statistics. The most detailed market information by consumers, producers and their brands can be found in our Annual Report. The information presented in this Report is intended for the exclusive use of MRC clients. The information presented herein is strictly the opinion of MRC and is based on data collected within the public sector and on data prepared by the specialists of MRC. MRC furnishes no security or warranty and assumes no liability as to consequences of decisions taken in regard to the information presented in this Report.

Classification of Products

The Report contains information on the following products: LDPE – low-density polyethylene (high pressure - LDPE) with density up to 0.94 g/cm³; HDPE – high-density polyethylene (low pressure - HDPE) with density more than 0.94 g/cm³; LLDPE – linear low-density polyethylene (high pressure - LLDPE) with density up to 0.94 g/cm³.

Producers

Producers mean enterprises directly engaged in PE production; i.e. the analysis does not include all trading, intermediary and offshore companies. The names of producers are given without inverted commas, their organizational and legal forms are omitted, and we use general names of groups of companies without names of their subsidiaries.

Consumption

The consumption rate is defined as the calculated one, i.e. it equals to the formula "production + import - export". This figure does not account stock remainders, and cannot conform to the level of the end consumption.

Prices

In our reports we try to represent prices of deals on sales of raw materials as accurate as possible. PE prices presented in the Report are quoted as CPT, Moscow (for more details see Price Reports). At the formation of prices we consider prices of the current month.

Diagrams and Tables

Diagrams in the Report are often doubled by the corresponding tables. This has been done deliberately, since diagrams help define either one or another trend, while corresponding accurate figures from tables are needed for more prices analysis.

Designations

In our Report we used the following designations: MT – ton, thous. - thousand, mln. – million, RUB – Russian ruble, USD – US dollar, EUR – Euro.

Growth Indexes

As a rule, a growth index in tables is the ratio of an index during the analyzed period to the previous period. In case of illogically high (low) indexes, for example, 600%, we put "-".

References in the Text

* - prices in the domestic market of the Russian Federation calculated taking into account "weight" of each brand depending on its consumption volumes. For Russian brands - CPT, Moscow; for foreign brands - DDU, Moscow.

1 – domestic price, reduced to CPT, Moscow, including customs duty and VAT, RUB (average weighted price index of not less than five domestic and foreign PE brands);

2 – domestic price, reduced to CPT, Moscow, including customs duty, RUB (average weighted price index of not less than five domestic and foreign PE brands);

3 – growth regarding the similar month last year (mtm);

4 – aggregate from the beginning of the year up to the present month inclusive (ytm);

5 – growth regarding the same period last year (ptp);

Analytics:



Sergey Karaichentsev
sergey.karaichentsev@mrcplast.com
3 2 5 2 7 5 7 6 1
Sergeykaraichentsev

Subscription:



Svetlana Kivrenko
svetlana.kivrenko@mrcplast.com
3 7 3 8 2 1 4 9 2
Svetlanakivrenko



Polymers



Reports



News



Publications



Methodology



Prices



Clients Database